

Disseminate arts and culture to the world

Build a more attractive city

Enjoy sports even more

Get into a new business

Accelerate
the implementation
of renewable energy

Support youth
to take on challenges

Enjoy Tokyo's Nightlife

Achieve self-fulfilment
vigorously

Empower “you time” through digital transformation

Develop a safe and secure city

Progress to Advanced Mobility

Make a variety
of life possible

Be more in harmony with nature

Be fully prepared
for disasters

Realize a society in which women

Raise children with peace of mind

can play an active role

Further emphasize Children First

Live a prosperous senior life

Tokyo2050Strategy

U n l o c k i n g a B e t t e r F u t u r e

March 2025
TOKYO
METROPOLITAN
GOVERNMENT



Why are we now envisioning Tokyo in the 2050s?

- Milestones are a part of history. Humanity strode forward by taking the opportunities presented by huge waves of change to reshape politics, the economy, and society. And now, after overcoming the unprecedented crisis of the COVID-19 pandemic, we find ourselves at another milestone in history, the dawn of the digital age.
- When we think about our future, the tense international situation, the climate crisis, and a dwindling and aging population all factor in to make any vision extremely uncertain and unstable.
- At the same time, however, we believe that this presents us with an opportunity to change what could not be changed before and to use our powers to design the future of our choice.
- The times are moving at an incredibly fast pace, and change is accelerating. A world in which things that took a century to do in the past can be accomplished in 50 years, 20 years, and even as quickly as 10 years, is no longer a dream.
- Assuming this to be true, the future awaiting us in Tokyo in the 2050s, just 25 years from now, is sure to be radically different from what has come before. That is precisely why we have now put together a new vision for the future to serve as a compass guiding the administrative responsibilities and services of the Tokyo Metropolitan Government.
- The 2050 Tokyo Strategy, which we have now formulated, is also replete with the ideas presented by our residents on how they want to transform Tokyo. Upon the foundations laid by our predecessors, we will rebuild Tokyo into a city that drives the world's growth while maintaining the perspective of putting Tokyo residents first.
- We will accelerate our efforts even more without fear of change, unfettered by outdated ideas and preconceptions, and by aggressively introducing completely new approaches such as AI technology. In addition, the key to a brighter future is none other than empowering the “you time” of our residents, generating more personal time for them through comprehensive implementation of digital transformation.
- “Protecting the capital” to uphold the lives and livelihoods of the residents of Tokyo and the future. With these words firmly in mind, we will work together with you to make Tokyo the best city in the world—a city that balances maturity and ongoing growth, and where all individuals shine and feel a sense of wellbeing.

March 2025
Koike Yuriko
Governor of Tokyo



Tokyo 2050 Strategy

Unlocking a Better Future

NEW COMPASS

Society has been changing at an unforeseen pace, with the ever-intensifying climate crisis, the shrinking and graying population, and the explosive evolution of technologies such as generative AI. It is precisely because we live in such an era that we need to turn accelerated change into an opportunity and chart a trajectory for even greater progress.

The “Tokyo 2050 Strategy” is a new compass that integrates policies to be implemented by 2035 to realize the “Vision” of what Tokyo aims to be in the 2050s.

VISION FOR THE 2050s

The best city in the world—a city that balances maturity and ongoing growth
where all individuals shine and feel a sense of wellbeing

Better!!

Diverse City

Creating a Tokyo where everyone can fulfill their dreams and hopes, and each individual shines even brighter

Better!!

Smart City

Enhancing Tokyo’s full potential for a more vibrant Tokyo

Better!!

Safe City

Developing a safe and secure Tokyo by building a resilient and sustainable city

Table of Contents

● Initiatives and Results to Date P05

● “Vision” for 2050s and “Strategies” toward 2035

Diverse City

01 Children	P12
02 Childcare	P13
03 Education	P15
04 Youth	P16
05 Women’s Empowerment	P17
06 Work Style	P18
07 Longevity (Chōju)	P19
08 Community	P21
09 Inclusive Society	P22

Smart City

10 Startup	P24
11 Digital	P25
12 Global Finance	P26
13 Industry	P27
14 Tourism	P29
15 Culture & Entertainment	P31
16 Sports	P32
17 City Planning & Housing	P33
18 Infrastructure & Transportation	P35
19 Greenery and Water	P37

Safe City

20 Zero Emission	P40
21 Urban Resilience	P41
22 Disaster Preparedness	P43
23 Safety & Security in the City	P45
24 Medical treatment	P46
25 Tama area and Tokyo islands	P47
26 Structural reform	P50
27 All Japan	P51
28 Co-creating the future	P52

● Prediction for the 22nd Century P53

Initiatives and Results to Date

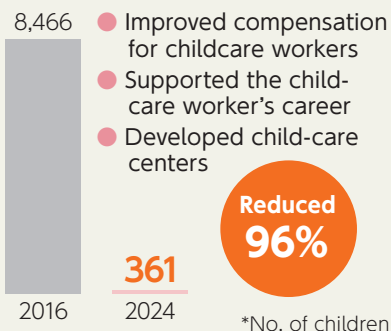
We have been working on various policies to realize a bright future for Tokyo where every individual can shine. Here are some of the major achievements to date.

Diverse City

Initiatives for a Society Where People Shine

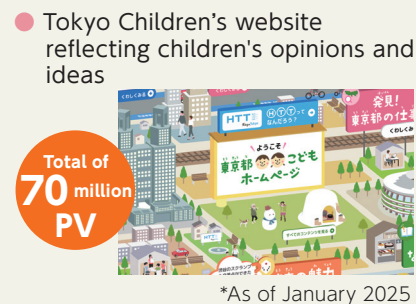
Children and Childcare

Waiting list almost eliminated!



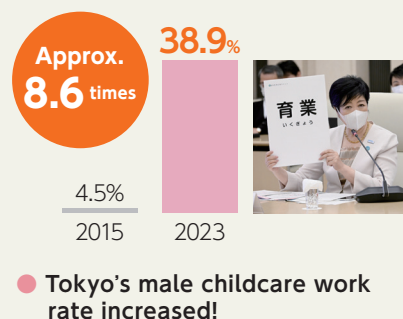
Children and Childcare

Reinforced dissemination from children's perspective



Children and Childcare

Parental leave? No. Childcare work



Children and Childcare

Tailored to the needs of childcare



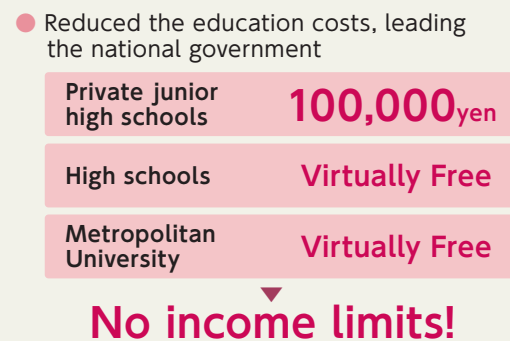
Children and Childcare

Eased financial burdens on childcare Tokyo's pioneering initiatives led to national policies



Children and Childcare

Eliminated income limits for tuition assistance



Children and Childcare

Responded to the hope to have a child



Education

Fostered global human resources by improving English proficiency, etc.

- Experiential English Learning Facility

TOKYO GLOBAL GATEWAY

(Aomi: FY2018 / Tachikawa: FY2022)



Women's Empowerment

Supported women's work

- Established **"Working Women Square"** (September 2024)

Support women's advancement through career and labor counseling



Longevity (Chōju)

Seniors can play a long and active role



Established **Platinum Career Center** (June 2024)

- Supported career shifts for seniors who want to remain active

Inclusive Society

A city where everyone can live as they wish

- Enacted the **human rights respect ordinance*** (October 2018)
- Founded the **"Tokyo Partnership Oath System"** (November 2022)



*Tokyo Metropolitan Ordinance Seeking the Realization of the Principle of Respect for Human Rights Outlined in the Olympic Charter

Education

Realized **Smart Schools**

- One computer per student for learning

3.9 students/device ▶ **100%** (2020)

- High-speed communication network in place

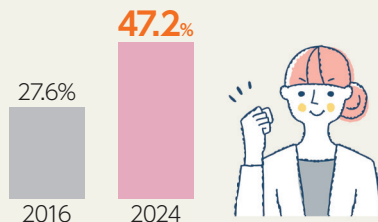
▶ **100%** (2021)

- Promoted the digitalization of education

Women's Empowerment

Introduced Tokyo's version of the **"quota system"**

- Increased the percentage of women appointed to the Tokyo Metropolitan Deliberation Panels to at least 40%



Longevity (Chōju)

Steadily built a long-term care service infrastructure

- **Special nursing home for the elderly** **37,000** more over 30 years
- **Long-term care health facility** **16,000** more over 25 years
- **Group home for the demented elderly** **8,000** more over 16 years

Inclusive Society

Developed **inclusive parks**

- Developed **children's playgrounds** in Kinuta Park, Fuchu no Mori Park, and other metropolitan parks where anyone can play



Smart City

Initiatives Leading to the City's Growth

Startup

A major hub for Startups

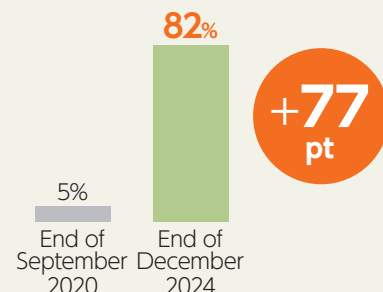
- Establish a base where startups from Japan and abroad can gather and interact (FY2023)

TiB Tokyo Innovation Base

Digital

Digitization of Admin. Procedures

- Digitization of Admin. Procedures



Digital

Accelerated Tokyo-wide DX (digital transformation)

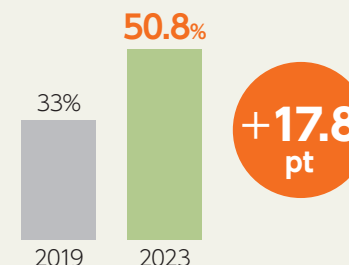
- Established **GovTech Tokyo**, a group of technicians with highly specialized skills
- Promoted Children's DX and supported childcare in a push-button manner



Industry

Reinforced capacity of SMEs

- Percentage of SMEs with positive sales vs. previous year



Startup

SusHi Tech Tokyo (Sustainable High City Tech Tokyo)

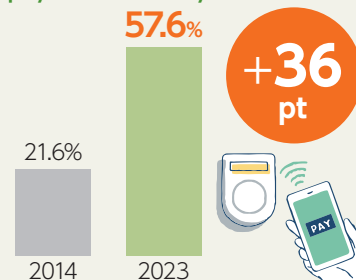
- Realize a sustainable city with high technology
- SusHi Tech Tokyo2024**
- Over 430 startups exhibited
- Joint statement by 45 mayors worldwide
- One of the largest in Asia in 2 years!



Digital

Cashless payment ratio increased

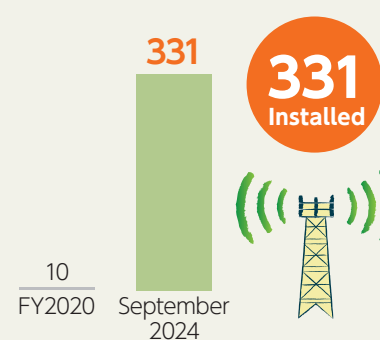
- Percentage of cashless payments in Tokyo



Digital

Connected Tokyo

- 5G Base Stations



Industry

Expanded the use of Tama timber

- Established an information center to exhibit Tama timber products (FY2023)



Tokyo Timber Attraction Center "TOKYO MOKUNAVI"

Tourism & Contents

Promoted the branding of Tokyo

- Promoted the appeal of Tokyo to the world with the brand icon **“Tokyo Tokyo”**
- Promoted the value and appeal of traditional skills and long-established products as representative brands of Tokyo through the **“Edo Tokyo Kirari Project”**



Culture & Sports

Succeeded in Tokyo 2020 Games

Tokyo 2020 Games were held safely and securely

- **Medals** were produced from **small appliances**
- Volunteers exceeded **80,000**

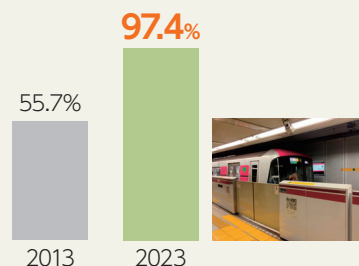
Legacy evolved

- **Tokyo Legacy Half Marathon** held

Transportation, Community Development, Greenery

Developed platform doors for Tokyo subways

- **Installed at all stations** in Toei Subway System



Transportation, Community Development, Greenery

Reinforced road network

- **Urban Planned Roads** (2016⇒FY2021)

48km
completed

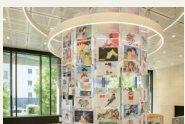
- **Loop Route No. 2, Chofu-Hoya Line**
All roads open



Tourism & Contents

Developed animation base

- Opened **“Anime Tokyo Station,”** a base for exhibiting animation (FY2023)
- Promoted the appeal of **Japanese animation** content, which has a solid fan base around the world



Culture & Sports

Developed a center for art and digital tech

- Established **CCBT** (Civic Creative Base Tokyo) (FY2022)

- Enhanced **opportunities for creation** and participation in arts and culture

CCBT

Transportation, Community Development, Greenery

Tokyo's sea gateway

- **Tokyo International Cruise Terminal**



- **The world's largest cruise ships call at the port**
- **Harumi Passenger Vessel Terminal**
Plans to reopen from June 2025

Transportation, Community Development, Greenery

Promoted Tokyo Green Biz

- **Metropolitan parks**
Newly opened parks equivalent to **40 Tokyo Domes** (2019→end of FY2024)
- Large-scale private development in the three central wards of Tokyo has created 60,000 m² of greenery (2019 onwards)

Tokyo GREEN Biz
みどりと生きるまちづくり

Safe City

Initiatives to Ensure Safety and Security

Zero-Emission

Reinforced climate change measures

- Japan's first scheme to **mandate the installation of solar panels** on new homes (to be enforced from April 2025)

Expanded support for installation

Zero-Emission

Popularized energy-saving appliances

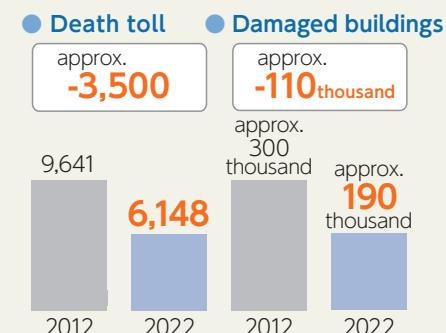
- Supported the **conversion to LEDs** of light bulbs
- Promoted the **Zero-Emi Point System**
Air conditioners, refrigerators, water heaters, etc.



Urban Resilience and Disaster Preparedness

Strengthened disaster preparedness has significantly improved damage estimates

- Percentage of houses earthquake-proofed **+15.7 pt** in 14 years
- Percentage of non-combustible areas in development zones expected to suffer particularly severe damage **+16.5 pt** in 25 years
- Elimination of utility poles on metropolitan roads Center core area Mostly **completed**



Zero-Emission

Promoted the use of hydrogen energy

- Started using **domestically produced green hydrogen** in Tokyo (from FY2023)
- Green Hydrogen Trial Transactions for the Launch of a Hydrogen Exchange

Zero-Emission

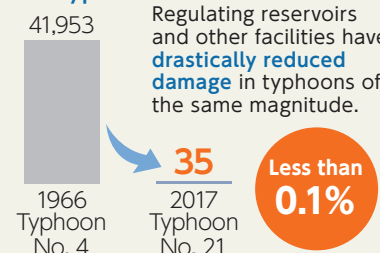
Decarbonized Mobility

- Over 60%** of new passenger car sales in Tokyo are **non-gasoline vehicles** (ZEV or HV vehicles)
- Promoted zero-emission **buses, trucks, and garbage trucks**

Urban Resilience and Disaster Preparedness

Developed communities resilient to wind & flood

- Number of buildings flooded by the typhoon



Urban Resilience and Disaster Preparedness

Reinforced disaster preparedness

- Distributed seismic breakers to applicable households
- Reinforced measures such as stockpiling support for the types of condominiums that are easier to continue living in even in the event of a disaster
- Distributed useful brochures on disaster preparedness



Safety and Security

Enhanced ability to respond to **increasingly diverse and sophisticated crimes**

● Improved capability to respond to terrorism etc.

- Improved capability to respond to terrorism using cutting-edge technology **analysis equipment**
- Introduced the latest detection equipment and enhanced forensic techniques for on-site **chemical** and **biological** detection

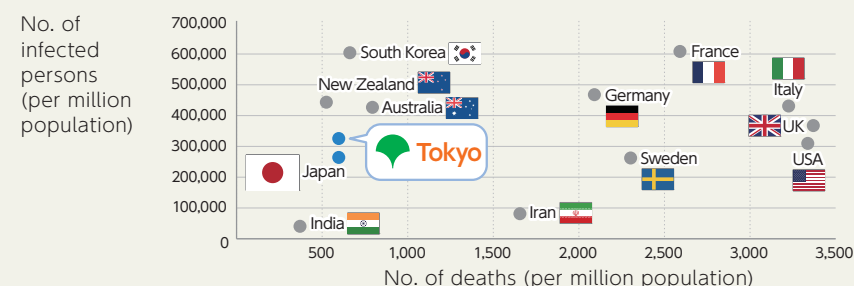
● Reinforced cyber security measures

- Introduced analysis equipment capable of handling **advanced cyber incidents** and trained cybersecurity personnel

Medical Care

“Tokyo Model” has resulted in a **lower** number of **infections and deaths** than in other countries

● Number of COVID-19 infections and deaths *As of May 8, 2023



Safety and Security

Measures to combat **crime around us**

- As part of the **“TOKYO Child Guards’ Circle Project,”** signed agreements with shopping complexes



Safety and Security

Reduced accident risk by elderly drivers

- Subsidized the installation of **safe driving assist devices** that prevent wrong accelerator pedal operation

Prevent traffic accidents and realize a safe and secure city

*Subsidy ended in FY2021

Medical Care

Founded the Tokyo iCDC

- Support effective infection control measures in Tokyo
- Network of experts** in infectious disease control, physicians, researchers, etc.
- Provide advice to TMG** based on scientific evidence and the latest findings, and disseminate clear information to the public



Medical Care

Reinforced measures for passive smoking

- Tokyo Metropolitan Ordinance** on the Prevention of Passive Smoking was enacted (published in July 2018)
- Subsidized the installation of outdoor **public smoking areas** and smoking rooms in mid-and small **restaurants**



Three “Cities” that will shape Tokyo's future

Diverse City

**Creating a Tokyo where everyone can
fulfill their dreams and hopes,
and each individual shines even brighter**

People have always been the driving force behind growth. By further accelerating “investment in people,” we will enhance and draw out the power of “people” and evolve Tokyo into a society in which each individual plays a leading role.

01

Children

Vision
for the
2050s

A children-first society that nurtures children's smiles



The year 2035 will be like this!

Tokyo will
be better

Provide full support for children's
"growth and nurturing" toward a bright future

Penetrate initiatives to listen to children's
opinions and reflect them in policies

Provide diverse support to children and
families with anxieties and concerns

Policy Targets

Children who smile a lot every day:
85% or more



Children who think they can change
society through their actions:
70% or more

Policies to make it better

To achieve
our vision

Conduct the "Tokyo Sukuwaku Program"
throughout the metropolitan area

- Programs to support infants' "growth and nurturing (Sukusuku)" and "curiosity and inquisitiveness (Wakuwaku)"

Provide children with a variety of "hands-on" opportunities

- Provide "playgrounds" and a variety of "hands-on activities" such as sports, arts and culture, and digital
- Match junior high and high school students who wish to gain "work experience" with companies and organizations

Strengthen close consultation systems and support

- Support the use of babysitters for a wide range of needs, including children with disabilities and medical needs
- Strengthen the system of child guidance centers and temporary protection centers

Children's Smile Movement

Promote children's participation
in society and diverse work
styles through
public-private
partnerships

Number of participating
organizations

868

December
2021

1,900

January
2025



Children's Future
Action 2025
*In Japanese

Momentum to respect
children will further
increase



Decided on the nickname
"Ikugyo" for parental leave:
June 2022

Children's Smile Movement
started: December 2021

Tokyo Metropolitan Basic
Ordinance on Children
enacted: April 2021

Support those who want to “make it happen” and assist in the self-fulfillment



The year 2035 will be like this!

Encourage people who want to meet and get married someday

Provide full and careful support to ensure a safe pregnancy and delivery

Thoroughly remove the financial and emotional burden of raising children

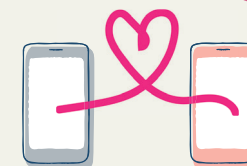
Tokyo will be better

Policies to make it better

To achieve our vision

TOKYO ENMUSUBI (AI Matching System)

- Provide opportunities for people who want to get married to meet each other comfortably
- Introduce compatible partners by AI and provide consultation on worries by professional staff



Establish a new system to offer the option of painless delivery

- Subsidize up to 100,000 yen for the cost of painless delivery (scheduled to begin in October 2025)
- Provide training to medical facilities that operate painless delivery



Free childcare for all families in Tokyo

- Free childcare fees for the first child in daycare centers and kindergartens until the national government implements the program (scheduled to begin in September 2025)

Create places for children to meet diverse needs

- Ensure a variety of places for children, such as school children's clubs and children's centers
- Establish a “Tokyo Metropolitan Authorized School Children's Club System” to meet the needs of children such as extended hours
- Create a place for children in the morning at elementary schools before classes start

Policy Targets

- Male childcare leave rate:

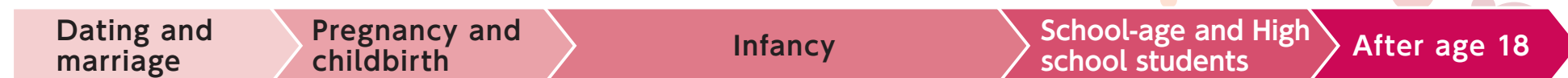
90% or more

- Eliminate waiting lists for school-age children by

FY2027



To ensure that those who wish to do so can have and raise children with peace of mind, we will seamlessly support them through every stage of their lives, from dating and marriage to pregnancy, childbirth, and the healthy growth of their children



■ **TOKYO ENMUSUBI**
(AI Matching System)



■ Introduce matchmaking services in cooperation with related organizations

■ Organize marriage support events

- **Painless delivery**
(Subsidize from Oct. 2025)
- Infertility treatment
- Recurrent pregnancy loss check
- Egg freezing

Initiative led to national policies

■ **018 Support**
Provide ¥5,000 yen per month per child up to age 18 without income limit

018 ゼロイチハチ サポート

■ Eliminate income limits for subsidizing children's medical expenses

■ Free childcare fees for the second child + **Free childcare fees for the first child**
(scheduled to begin in September 2025)

■ Establish sick childcare facilities and utilize babysitters to care for sick children

Until the national government starts the program

Initiative led to national policies

At pregnancy* ¥60,000	After delivery* ¥150,000 +¥50,000 from 2025	1 or around 2 years old ¥60,000
---------------------------------	--	---

→

■ Tokyo Childbirth & Childcare Support Programs

■ Tokyo Mom & Dad Support Programs

Provide professional consultation for concerns from pregnancy to child rearing, and support services such as childcare products
*Includes benefits for expected mothers (national program)


■ **Promote Children's DX collaborating with the national government, municipalities, and related organizations**
Provide convenient childcare support services through DX, such as "receiving necessary information from the application in advance," "applying for medical expense subsidies with your My Number Card," and "a one-stop system that completes all procedures from finding a daycare center to enrolling the child online"

Until the national government starts the program

- Tuition free for high schools (Eliminate income limits)
- Reduce school lunch expenses

■ Tokyo's unique after-school drop-in center

■ Secure a place for children in the morning at elementary schools before classes start




■ **Tuition free for Tokyo Metropolitan Univ.**
(Eliminate income limits)


■ **Program for university students to provide an opportunity to take the "first step" to study abroad**

■ **Scholarship repayment support system for teachers and engineering staff (civil engineering, architecture, mechanical, electrical)**

■ **Support the balance between childcare and career and promote childcare work**




■ **Children's Smile Movement**



■ **Create a housing environment conducive to childcare**
Enhance support for businesses that maintain and renovate homes by increasing subsidy rates for rental housing renovation, increasing subsidy limit and expanding eligibility to include detached houses

Provide affordable housing that is comfortable for families with children, etc., by utilizing private-sector resources



Measures to address Tokyo's declining birthrate!
*In Japanese

Children and youth grow and develop themselves with hope and create a future



The year 2035 will be like this!

Tokyo will be better

Establish a “new style of education” that responds to changes in society and fosters global human resources

Create an environment where everyone can develop their individuality and strengths and grow in their own way

Further promote reforms in working styles at school to improve the quality of education

Tokyo Metropolitan University produces highly skilled human resources who contribute to solving global problems

Policies to make it better

To achieve our vision

■ Develop “new style of education” in metropolitan high schools

- Support independent learning by visualizing learning status so that students can learn at any time inside and outside of school and teachers can accompany them in their learning
- Prepare for the opening of implementing schools that will serve as flagship schools for the “new style of education”

■ Foster global human resources who can be active in the world

- Provide various overseas exchange programs and support young people who will lead the world
- Promote entrepreneurship, science and mathematics education, etc.

■ Enhance education for diverse children

- Expand “Challenge Classes” for children not attending school
- Develop an inclusive educational environment regardless of disability
- Enhance activities leading to the development of social skills of children and young people

■ Establish a new faculty at Tokyo Metropolitan University

- Establish a new international faculty to nurture human resources with education, creativity, and language skills (target to open in FY2028)
- Introduce a university-wide program that allows students to earn degrees in English



Policy Targets

- Percentage of metropolitan high school students using generative AI

100%



- English Proficiency for 3rd year high school students CEFR A2 level or above

85%

Youth, the bearers of the future, are full of hope and can fulfill the dreams they have drawn



The year 2035 will be like this!

Tokyo will
be better

Proactively utilize the voices of young people and work with them to change society

Support the proactive challenges of young people and enhances the vitality of Tokyo

Provide seamless support for the social independence of youths with worries and anxieties

Policy Targets

- Number of foreign students supported by the TMG

Cumulative total: **26,000**

*FY2021-FY2035

- Young people who think they can change society through their actions:

40% or more



Policies to make it better

To achieve
our vision

Support youth to take on challenges

- Establish a "TMG version of the Study Abroad Program (for university students)" to provide an opportunity for more young people to take the "first step" to study abroad
- Support for schoolteachers and engineering staff of TMG and municipalities in repaying scholarship funds
- "PhD Human Resource Leverage Project" to utilize doctoral human resources by policy collaboration organizations
- Support activities that bring students interested in entrepreneurship into contact with entrepreneurs

Accompany young people who raise an SOS

- Create a system to listen to young people with difficulties and provide support in cooperation with relevant organizations and NPOs

● "Wakapota +"



A portal site where young people in distress can easily find support and a place to stay that suits them, anytime, anywhere

● "Wakanabi α"



Free general consultation service for young people aged 18 and over and their families

● "Kimimamo@kabukicho"



Free general consultation service for youths who gather in public disorderly neighborhoods

Everyone can choose their own way of life, regardless of gender



The year 2035 will be like this!

Raise awareness and dispel the unconscious bias that hinders women's advancement

Promote women's advancement in economic fields and decision-making positions that are significantly lagging behind in the world

Realize an environment in which everyone can fully demonstrate their abilities throughout their life stages

Tokyo will be better

Policies to make it better

To achieve our vision

Expand "Women in Action" and promote mindset change with various stakeholders

- Expand the circle of women's activities (WA) and foster momentum in cooperation with companies and local governments, so that women can demonstrate their abilities in all aspects of their lives



Bring out the best in women's abilities

- Consider the ideal form of the ordinance in preparation for its enactment, and strongly encourage female advancement in the industry
- Provide incentives to companies that establish new allowances for non-regular employees with social insurance

Support for women entrepreneurs and managers

- Invest in the fund to support women entrepreneurs and startups that offer services promoting the advancement of women

Web site "TEAM Housework & Childcare"

- Disseminate a variety of information and advice to help society as a whole think and change as a "team" about housework and childcare

Promote women in STEM fields

- Conduct office tours for female junior and senior high school students to promote women in STEM (Science, Technology, Engineering and Mathematics) fields

Policy Targets

- Percentage of people who "think women can play an active role":

80% or more

- Satisfaction with housework/childcare sharing:

80% or more

TEAM
家事・育児
男性の家事・育児
みんなで考え変えていく!

Everyone can work and play an active role in a positive way, just as they are



The year 2035 will be like this!

Respond to the changing times and
realize a lifelong active work style

Accelerate the creation of a safe and secure
work environment

Create a society in which everyone can make
the most of their individuality at their own
wish

Tokyo will
be better

Policies to make it better

To achieve
our vision

Create an environment where people can choose where, when, and system for working

- Provide subsidies for introduction support by experts and office renovation costs to SMEs in Tokyo that aim to introduce ABW*, a system in which employees choose the time and place of work according to the nature and purpose of their work

*Activity-Based Working

- Support companies that increase “you time” of employees, generating more personal time for them by introducing diverse work styles such as 4-day workweeks, flextime systems, short-time regular employee systems, etc.

Safeguard workers and create a safe, high quality work environment

- Establish a customer harassment consultation service and provide incentives to companies and associations for prevention measures
- Encourage efforts to prevent abuse of power, sexual harassment, etc.
- Establish a consultation service for freelancers regarding the working environment and proper business dealings

Support career advancement through reskilling

- Support employee reskilling by deploying experts to companies and offering incentives
- Support fostering resources for DX through training for SMEs



Policy Targets

- Telework system adoption rate:

80% or more

- Awareness of Customer Harassment:

99%



An active Chōju society where people can live comfortably and always shine



The year 2035 will be like this!

Support the elderly in leveraging their diverse abilities and experiences

Enhance health by diversifying means of transportation, to broaden the range of activities

Further improve the nursing care infrastructure and create a comfortable work environment to prevent caregivers from leaving the nursing care workforce

Promote lifestyle support for single elderly people and people with dementia to relieve various anxieties

Tokyo will be better

Policies to make it better

To achieve our vision

Always be active with acts

- Support career centers to help shift careers of people over 50 years old and help companies secure human resources
- Promote matching of companies and senior human resources by the Silver Human Resources Center



Necessary nursing care services are available

- Provide a special allowance of up to 20,000 yen per month for to secure and retain nursing care personnel until the government acts
- Conduct a survey of nursing care establishments to examine the state of pay raises for nursing care workers

Single person can live alone without worry

- Spread housing where active, independent seniors can live with vitality
- Cultivate and strengthen "watchful care supporters," who notice unusual changes in the elderly at an early stage and connect them to comprehensive support centers and consultation services

Mobility support for active seniors

- Introduce means of transportation that meet local needs, such as community buses, demand transportation, green slow mobility
- Reduce the cost of the Silver Pass until it becomes an IC card or the system is revised

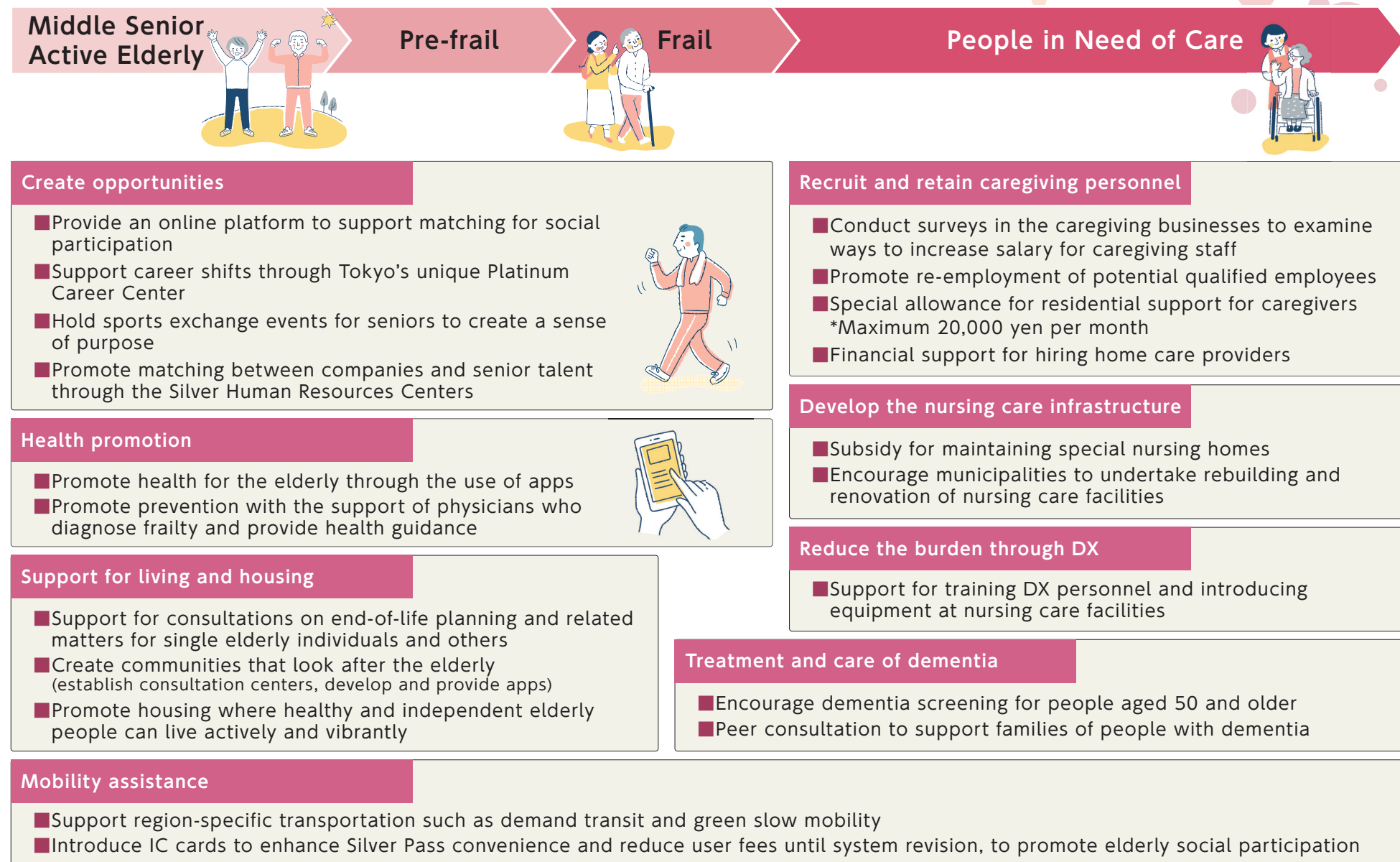
Policy Targets

Seniors feeling fulfilled in life:

85% or more



To realize an active “Chōju society” where people can continue to be active at any age, we develop measures tailored to the life stages of the elderly, considering their age and health status



Broaden the support network and foster a society where everyone feels connected



The year 2035 will be like this!

Tokyo will
be better

Policies to make it better

To achieve
our vision

Revitalize local communities and solving local issues through collaboration with various entities

Build volunteer momentum and establish a culture of mutual support

Provide a wide range of support from all angles to prevent unwanted loneliness and isolation

Policy Targets

- Percentage of those who participate in residents' or neighborhood association activities:

55%

- Places for Everyone:

2,400 places



Vitalize diverse communities that support neighborhoods

- Implement and evaluate initiatives to promote participation in residents' associations or neighborhood associations in cooperation with municipalities
- Support joint disaster drills between residents' associations and apartments to strengthen community ties
- Promote participation of women and young people in the volunteer firefighting brigade through publicity using social media, etc.



公益財団法人
東京都つながり創生財団
Tokyo Metropolitan Foundation "TSUNAGARI"

Increase interest in volunteering

- Build momentum for the World Athletics and Deaflympics through the portal site "TOKYO volunteer legacy network"



Create various places to stay

- Increase the activity expenses for welfare and child welfare volunteers to maintain the community watch-over system
- Support pioneering, cross-sectoral efforts by municipalities to create places to stay, in terms of both intangible and tangible aspects

Inclusive City Tokyo reaches new heights as diverse personalities shine



The year 2035 will be like this!

Further promote efforts to realize an inclusive society and develop an inclusive environment

Realize smooth interaction and transportation through the use of cutting-edge technology

Create a society where both people from abroad and Japanese can live and work together comfortably

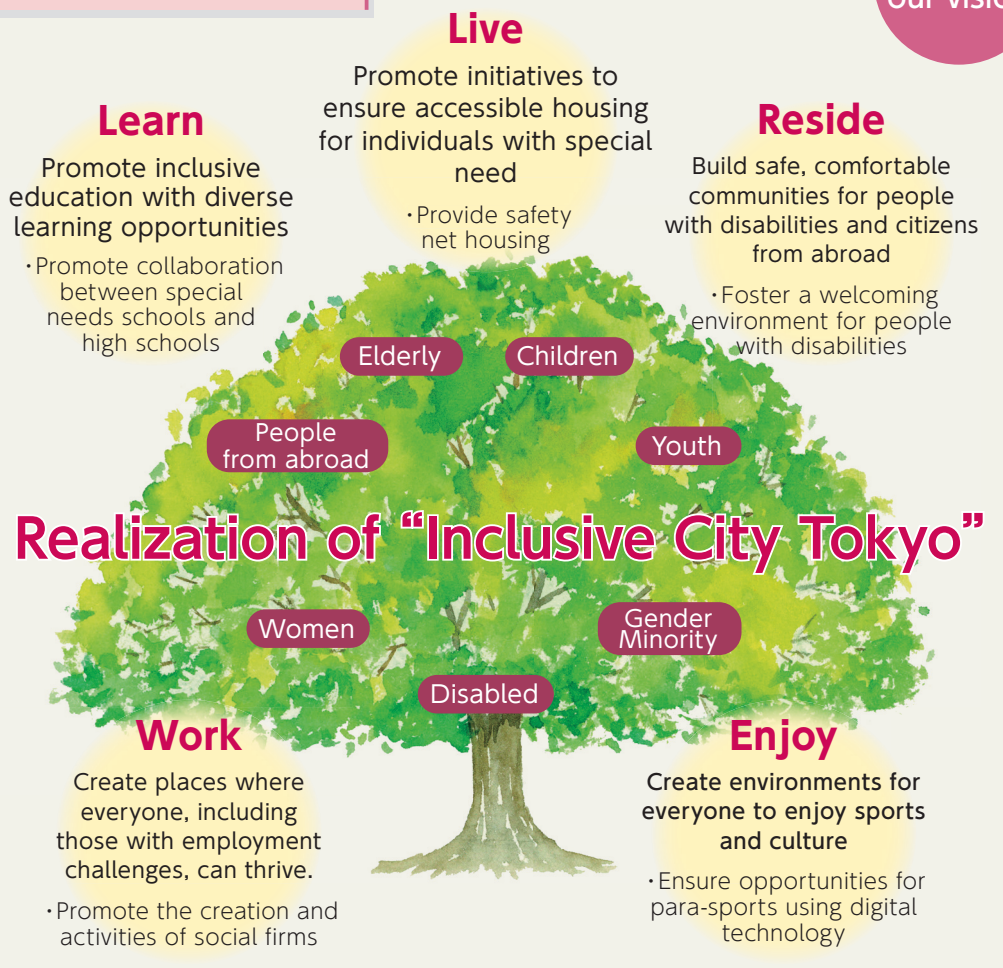
Tokyo will be better

Policies to make it better

To achieve our vision

Policy Targets

- Increase the number of employees with disabilities by **60,000**
- Percentage of people who think it is natural that people from abroad live close to them: **90%**





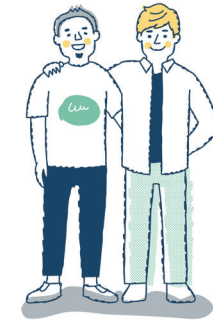
Three “Cities” that will shape Tokyo's future

Smart City

**Enhancing Tokyo’s full potential
for a more vibrant Tokyo**

Tokyo is a capital city where tradition and innovation coexist.
We will maximize Tokyo’s potential to evolve into
“an attractive city admired by the world”
where people can live in comfort and affluence.

By continuously generating innovation, Tokyo leads global transformation and growth



The year 2035 will be like this!

Tokyo will be better

Foster a momentum where challengers are born and supported

Deepen the support ecosystem to create an environment where startups are continuously born and grow

Support dramatic growth of Tokyo-born unicorns to dominate the global market

Policies to make it better

To achieve our vision

Expand the startup ecosystem with TIB at its core

- Provide mentoring opportunities from managers to promising startups
- Support for developing innovation facilities for deep-tech startups

“SusHi Tech Tokyo,” one of the largest startup conferences in Asia

- Create innovation through discussions and exchanges among diverse domestic and international players, including startups, investors, large companies, cities, and students

Develop measures to create unicorns

- Attract prominent foreign VCs and accelerators
- Support for forming clusters specializing in specific areas, such as space and deep tech

Tokyo Innovation Base

- A support base that connects startups with accelerators, VCs, universities, and various other domestic and international players

TiB Tokyo Innovation Base

SusHi Tech Tokyo

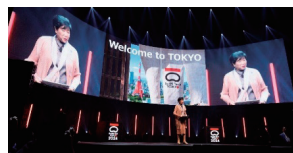
- “Sustainable High City Tech Tokyo”
- Efforts to realize a sustainable city with high technology



Policy Targets

GLOBAL STARTUP ECOSYSTEM RANKING

Top 3 in the world



Number of public-private collaborative practices:

1,000 cases /year

“Smart Tokyo,” the world’s most information technology-enabled, convenient and comfortable city



The year 2035 will be like this!

Develop digital services that are convenient and comfortable for Tokyo residents

Establish an advanced telecommunications environment that will serve as the foundation for Smart Tokyo

Advance Tokyo’s digital transformation to the next stage through the promotion of digital governance in the TMG

Tokyo will be better

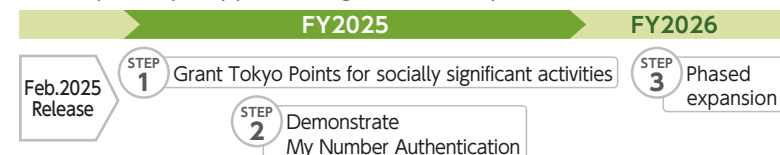
Policies to make it better

To achieve our vision

Realize a smart city that contributes to the QOL (Quality of Life) of Tokyo residents

- Strongly promote “Policy DX” across organizations and sectors
- Increase the “you time” of Tokyo residents, generating more personal time for them by using AI and other technologies

Develop “Tokyo App” to integrate various procedures and services



Create the “TOKYO Data Highway”

- Promote “Connected Tokyo” to guarantee seamless connectivity for everyone, anytime and anywhere
- Ensure a “connected” environment even in case of disasters by strengthening cell phone base stations

Promote structural reforms to further enhance the QOS (Quality of Service) of the TMG

- Share systems and digital tools for the TMG and municipalities
- Enhance digital human resources and promote DX in municipalities and policy collaboration organizations

Improve QOL through digital technology, enabling everyone to shine

Policy Targets

- Digitization of administrative procedures(online application)

100% of applications

- Cashless payment ratio

Increase to **80%**



Make the leap to Tokyo, the world's financial hub for a sustainable future



The year 2035 will be like this!

Implement diverse initiatives to become
Asia's innovation and financial hub

Develop a global-standard business
and living environment

Promote Tokyo's strengths as a global
financial hub through strategic public-private
collaboration

Tokyo will
be better

Policies to make it better

To achieve
our vision

Sustainable Finance

- Stimulate sustainable finance by supporting the issuance of SDGs bonds by corporations and issuing Tokyo Green and Blue Bonds
- Utilize public-private partnership funds

Expand the base of finance-related players

- Utilize special zones for finance and asset management
- Promote EMP (Emerging Asset Manager Training Program)

Create a global standard environment

- Promote English-language support for administrative procedures
- Invite international schools
- Promote English-language IR disclosure of companies

Financial Innovation

- Support FinTech companies to collaborate
- Support FinTech companies to expand overseas
- Support the issuance of digital securities



Strategic outreach to the world

- International promotion primarily through FinCity.Tokyo*
- Strengthen relationships with financial professionals in major cities around the world

Policy Targets

- International Financial Center Ranking (Mori Memorial Foundation)

Overwhelmingly Asia No.1

- Green bond publicly issued in Japan

3 trillion yen or more



*FinCity.Tokyo...An organization that promotes various promotional activities through public-private partnerships with the aim of making Tokyo a world-class international financial center

Create the next growth industry from Tokyo and lead the global economy



The year 2035 will be like this!

Stimulate Tokyo's economy by promoting entry and investment in growth industries

Support small and medium-sized enterprises (SMEs) and encourage growth in all industries

Establish a foundation for business succession and support efforts to create new value

Tokyo will be better

Policies to make it better

To achieve our vision

Promote entry and investment in growth industries

■ Active investment in industries that enhance future competitiveness

- Support the creation of demand for products developed by GX (Green Transformation) startups to support their growth
- Support entry into aerospace and other industries
- Support matching CVC (Corporate Venture Capital) with startups

■ Support mid-sized companies' growth

- Support new business development, diversification, research and development for Tokyo's SMEs



■ Cooperate with large companies

- Support matching startups that wish to utilize facilities owned by large companies



Policy Targets

- **700** collaborations with major companies
- Increase in the ratio of people who consciously purchase foods produced in Tokyo to :
85%



Scan here for support menu
(Tokyo Metropolitan Small and
Medium Enterprise Support Center)

Support SMEs and help them grow

■ Increase competitiveness and productivity

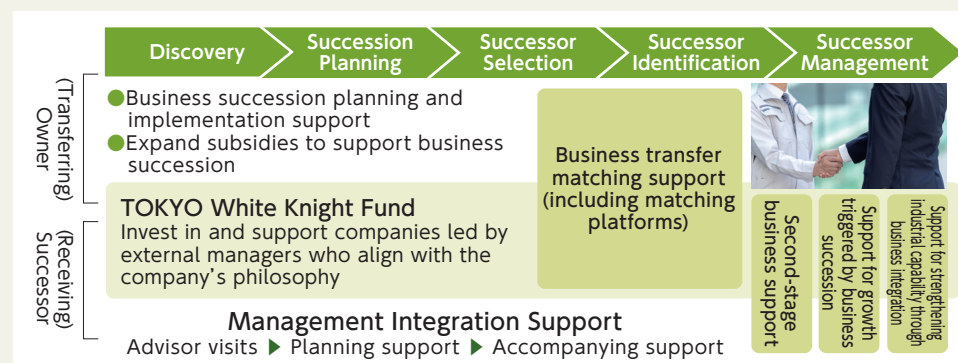
- Subsidize the cost of introducing newly required machinery and equipment
- To promote DX of SMEs, cover the cost of introducing digital technology and provide consultation services and accompanied support
- Support SMEs aiming to expand overseas, from planning to implementation, depending on the size and stage of the businesses

■ Strengthen management bases

- Support SMEs' preparations for price negotiations and wage increases through cost management services using AI technology provided by startups
- Provide total support for shopping arcades working to improve brand strength, from problem identification to implementation

■ Support for Seamless Business Successions

- Further support for each stage of business succession, from identifying successors to management takeover, and for new business development triggered by succession



Establish a sustainable agriculture, forestry, and fisheries industry that can be passed on to the next generation

■ Agriculture for the Next Generation



Preservation of agricultural land

- Promote long-term leasing of farmland
- Establish of Hands-On Farms

Smart Agriculture

- Develop new urban agricultural management models using smart technology

Branding Tokyo-Grown Agricultural Products

- Disseminate information at receptions and events

■ Promote Forest Circulation

Forest circulation to reduce pollen production



- Encourage replanting with low-pollen trees like cedar

Effective use of advanced technology

- Use cloud systems and introduce forestry machinery

Showcasing the appeal of Tama timber

- Promote the appeal of Tokyo wood at 'TOKYO MOKUNAVI' and 'MOCTION'

■ Sustainable Fisheries

Resource Management



- Create a land-based aquaculture business model
- Promote seaweed bed development that adapts to changes in the marine environment
- Disseminate information on the fishing ground environment through forecasting systems for sea water temperature and ocean currents

Publicize and expand sales channels for Tokyo marine products

- Promote fish consumption by holding lectures for children

■ Secure and nurture human resources in agriculture, forestry, and fisheries industry

■ Spread the appeal of Tokyo's agriculture, forestry, and fisheries industry through influencers and social media

Create a Tokyo that captivates the world, offering new experiences and discoveries with every visit



The year 2035 will be like this!

Refine Tokyo's unique attractions and content to create new vibrancy

Promote multifaceted efforts to ensure sustainability in tourism

Strengthen management capabilities of businesses and improve convenience for travelers through tourism DX

Tokyo will be better

Policies to make it better

To achieve our vision

Attract Travelers

■ Refinement of contents

- Diverse tourism, including the use of animation

■ Strategic promotion

- Promote Tokyo's appeal through the use of the "Tokyo Tokyo" brand icon
- Strengthen digital marketing using data

■ Creation of a comfortable and enjoyable environment

- Facilitate the smooth purchase of entertainment tickets and create an environment where people with disabilities can enjoy more comfortably

■ The world's top gastronomic city

- People from all over the world will enjoy Tokyo's diverse culinary attractions



Taste of Tokyo Festival

Improve Sustainability

■ Sustainable Tourism

- Raise awareness of tourism etiquette
- Build good relationships between tourists and local residents

Strengthen management capabilities

■ Tourism DX

- Improve operational efficiency and labor-saving through digital technology
- Improve convenience for travelers by providing multilingual and cashless services

Establish Tokyo's position as one of the world's best tourist destinations

Policy Targets

- Spending by international visitors to Tokyo
Increase to **6.3 trillion yen**

- International visitors to Tokyo
Increase to **40 million**



Promote Strategic Nighttime Tourism

- Toward a more enjoyable Tokyo Nightlife

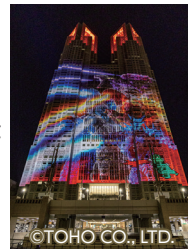
- In the “Global Power City Index (2024)”, Tokyo’s ranking for nightlife quality surged from 30th to 8th place
- Tokyo has many attractive contents such as food, movies, and light-based attractions such as projection mapping.
By leveraging these diverse local resources, we create a vibrant and lively city

Announced by the Mori Memorial Foundation’s
Institute for Urban Strategies in December 2024

Various nighttime contents

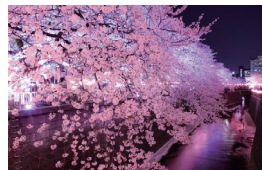
■ Utilization of projection mapping

- In collaboration with private sector, continuously and extensively implement projection mapping throughout Tokyo



■ New attractiveness with light performance

- Bring out the charm of buildings, cherry blossoms, autumn leaves, and other local attractions by lighting them up



■ Nighttime x Food

- Showcase Tokyo’s diverse culinary attractions, from restaurants to hidden alleyway bars



■ Special nighttime experiences

- Provide a variety of ways to spend nights by extending the opening hours of museums and art galleries and by utilizing unique venues
- Offer new experiences such as large-scale flowerbed illuminations and special nighttime garden viewings



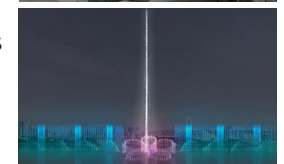
■ Nighttime x Entertainment

- In addition to stage performances like Kabuki, art, and entertainment, sports games are also attractive tourist content



■ Vibrancy by light and water

- Create lively atmospheres with light displays, such as one of the world’s largest fountains in the Tokyo Bay area and waterscape facility in Yoyogi Park



Community-based Nighttime Tourism

■ Leverage Local Characteristics

- Promote initiatives that are rooted in each of the diverse areas, from downtown districts to rich nature

■ Collaborate with local residents and businesses

- Promote consideration for the living environment of residents and share issues between residents and businesses



Traveler support

■ Provide effective information

- Promote the dissemination of information about nighttime tourism and facilitate smooth ticket purchases for entertainment

■ Create an environment for comfortable Nighttime Tourism

- Promote multilingual support and ensure safety and security tailored to local conditions

Make Tokyo’s night more fun

Sophisticated value from Tokyo inspires and enriches the hearts of people around the world



The year 2035 will be like this!

Tokyo will be better

Create a positive cultural cycle
that continues to expand Tokyo's art scene

Nurture Tokyo's young talents and enabling
their success on the global stage

Promote the "History and Culture Continuing
from the Edo Period" while aiming to become
a World Heritage Site

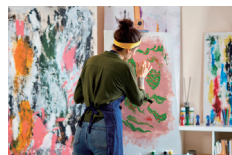
Policy Targets

- Improve the percentage of people who
"enjoy the cultural environment"

To **75%** or more

- Increase the percentage of people
who take part in cultural activities

To **40%** or more



Policies to make it better

To achieve our vision

■ Realize Tokyo as a vibrant city of arts and culture

- Promote the festivals as a "Comprehensive International Arts Festival,"
and present a unified vision by integrating individual scattered events,
disseminating this both domestically and internationally



Atelier Sisu 《Ephemeral Collection》
© Roppongi Art Night Executive Committee

■ Nurture artists and creators

- Cultivate world-class animators at a "modern version of Tokiwa-so"
- Promote "Talents Tokyo" to produce film professionals who will thrive on the
world stage
- Operate "START Box," a creative space for artists

■ Promote Edo's history and culture

- Promote the appeal of Edo culture both domestically
and internationally, and promote its branding with
the aim of becoming a World Heritage site
- Seize the opportunity of the Tokyo Metropolitan
Edo-Tokyo Museum's renewal to conduct intensive
promotions



New Edo Logo

Develop into a world-class sports hub where everyone enjoys sports



The year 2035 will be like this!

Tokyo will be better

Improve lifelong health and well-being by providing sports opportunities tailored to each individual

By utilizing digital technology, ensure an environment where everyone can enjoy sports without discrimination

Build a foundation to support sports and energize Tokyo with the power of sports

Policies to make it better

To achieve our vision

Shine in Sports

- Provide children with opportunities to watch the World Athletics Championships and the Deaflympics
- Establish a system to support young athletes aiming for the world stage, by providing assistance for them to participate in domestic and international competitions and training camps

Connect through Sports

- Hold memorial events to pass on the memories of the Paralympics and the Deaflympics and to increase interest in para-sports
- Host the Senior Health Sports Festival

Thrive in Sports & Support Sports

- Promote initiatives for the success of the World Athletics Championships in and the Deaflympics to be held in 2025
- Organize the Tokyo Marathon and the international cycling road race "THE ROAD RACE TOKYO"
- Support inviting and organizing international sporting events

Policy Targets

- Increase the percentage of Tokyo residents who feel a sense of well-being through sports to **80%**
- Keep the percentage of Tokyo's residents playing sports above **70% or more** and aim to raise it to **the world's highest level**



WORLD ATHLETICS
CHAMPIONSHIPS
TOKYO 2025

World Athletics Championships
Tokyo 25 Logo



TOKYO 2025
25TH SUMMER DEAFLYMPICS

TOKYO 2025 DEAFLYMPICS
Emblem

Tokyo, a city that drives Japan's growth and where people shine with vitality



The year 2035 will be like this!

Tokyo will
be better

Build attractive and vibrant centers and landscapes, and create a walkable and livable city

Create a city that opens up the future with cutting-edge technology and new lifestyles

Ensure a safe and secure home for everyone, including households with children

Policy Targets

- Reorganize the area around the key terminal station Land readjustment project near Shinjuku Station:

Substantially completed

- Number of districts where municipalities are working on urban development through renovation:

15 districts



Policies to make it better

To achieve
our vision

Form various bases to support growth

- Promote sustainable renewal of urban areas and improvement of urban infrastructure by guiding high-quality private-sector development
- Develop diverse hubs that leverage regional characteristics, and create enjoyable walking spaces with a sense of water and greenery

Urban redesign focused on the unique characteristics of people and regions

- Create walkable neighborhoods by remodeling areas around stations and street spaces
- Promote the appeal of historically and culturally valuable buildings familiar to Tokyo residents, and support their preservation and use



Walkable neighborhoods
(Image provided by Mitsubishi Estate Co.)



Bustling shopping area



Public bathhouse

Housing as the foundation of people's lives

- Utilize private sector vitality to provide affordable housing that is comfortable for families with children
- Promote community development by using and renovating existing stock, including vacant houses (initiatives such as the Tokyo Vacant House Map and renovation contests)

This is how Tokyo is changing!

Tachikawa

A city that enhances convenience and resilience, allowing people and goods to interact freely



Along the Tama Toshi Monorail Line

Districts along the extended Tama Toshi Monorail line where the forest provides healing, children thrive, and a new lifestyle is realized



Tama New Town

A town chosen by the child-rearing generation, where everyone can live and interact with peace of mind



Station Areas

A vibrant, sustainable neighborhood that leverages its unique character

Islands

A region that leverages natural attractions and cutting-edge technology to offer a relaxed lifestyle and attract tourists



Shinjuku Sta. Area

An international exchange hub where people, goods, and information from both Japan and abroad gather and interact



Jingu Gaien

A world-class sports center that combines liveliness and greenery with elegance and vitality



Ikebukuro Sta. Area

International art and culture city with a concentration of theaters, halls, and subculture-related facilities



Tokyo Sta. Area

A stately international business hub with lush greenery and beautiful landscaping



Shinagawa Sta. Area

An international hub leveraging wide-area access, including the Linear Chuo Shinkansen and Haneda Airport



Roppongi and Toranomon Sta. Area

International business center with a variety of international facilities



Shibuya Sta. Area

A center for advanced culture, including fashion and entertainment

Tokyo Bay Area

A future-focused area driving sustainable growth, leveraging its city-center proximity and the Tokyo 2020 legacy



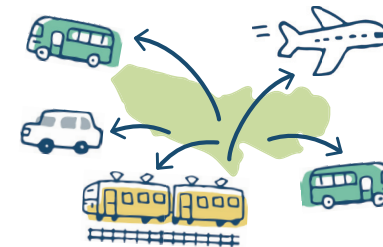
Tokyo Bay eSG Project

Promote social implementation of cutting-edge technologies in Tokyo Bay Area and presenting a vision of the city of the future



*In Japanese

The world's best infrastructure connects people and supports their lives



The year 2035 will be like this!

Tokyo will
be better

Further strengthen transportation infrastructure to support the world's largest metropolitan area

Create a transportation environment accessible to all

Secure the bearers and driving forces to maintain advanced urban functions for the future

Policy Targets

- Realization of smooth road traffic
283 congestion-prone locations (FY2021)
Reduction by **approx.30%**
- Social implementation of Advanced Air Mobility(AAM)
Realization of commercial operation in urban areas (FY2030)



Policies to make it better

To achieve
our vision

People-centered Streets

Create street environment that supports safe, secure and comfortable living

- Create green and attractive road spaces (safe and comfortable, expanding the canopy of roadside trees)
- Improve the bicycle use environments
- Barrier-free roads



Bicycle pedestrian path (Koto city)

Advanced Mobility

Socially implement Advanced Mobility

- Expand the area for promoting the introduction of automated driving
- Promote joint public-private projects to implement AAM in urban areas



Roads

- Expressways that create interaction in the metropolitan area
- Form a smooth, user-friendly road network for everyone

- Develop three loop roads in the Tokyo metropolitan area (e.g., Gaikan Expressway)
- Reinforce Metropolitan Expressway functions (undergrounding of the Nihonbashi area, construction of the Highway Harumi Line)
- Develop key arterial roads (such as Loop Road No. 4 and Kokubunji Route 3-2-8)
- Promote continuous grade separation projects (such as the Keio Line from Sasazuka to Sengawa)



Develop key arterial roads (Kokubunji Route 3-2-8)



Completed continuous grade separation projects (the Keio Airport Line)

Airport & Ports

- Develop airport and ports to triumph over inter-city competition
- Strengthen the functions of the airport, serving as the gateway to Tokyo (enhance airport access, increase acceptance of business jets)
- Port of Tokyo with world-class efficiency and sustainability (development and reorganization of container terminals, creation of a carbon neutral port)
- Improve the Port of Tokyo's function to accommodate tourism



Haneda Airport



Tokyo International Cruise Terminal

Public Transportation

- Enhance and strengthen the public transportation network that supports urban activities and the lives of Tokyo residents

- Improve the railroad network (extension of Tokyo Route 8, Tokyo Central and Shinagawa Subway, Tama Toshi Monorail (Hakonegasaki direction), etc.)
- Build transportation nodes that are easy to transfer, and enhance and strengthen regional public transportation systems (e.g., introduction of automated driving technology to public transportation)
- Introduce a variety of transportation modes (demand-oriented transportation, boat transportation, etc.)



Tama Toshi Monorail



Shipping

Logistics

- Ensure smooth logistics supporting the city's economy and livelihood

- Address transportation capacity shortages (Promote Tokyo Logistics Biz, including publicity to reduce redelivery)
- Improve logistics efficiency through the use of DX (container terminals, expansion of automated transport technology in the market)
- Study new logistics systems (automated driving, automated logistics roads, etc.)
- Eliminate logistics bottlenecks (use of ETC-only toll booths on expressways, early elimination of toll booths on main lines)

Maintenance

- Build smart and sustainable infrastructure and areas

- Well planned maintenance and renewal of infrastructure (Roads, railroads, rivers, ports, parks, water and sewage systems)
- Improve efficiency of maintenance and management through the use and development of new technologies

Tokyo, a city of greenery and water, a city of peace and tranquility



The year 2035 will be like this!

Protect existing greenery
and halt the decline of greenery
and create new greenery

Create a lively waterfront,
attractive river space, and improve water
quality in the outer moat

Promote a stable supply of safe and delicious
water and a healthy water cycle through
water quality preservation

Tokyo will
be better

Policies to make it better

To achieve
our vision

Promote Tokyo Green Biz

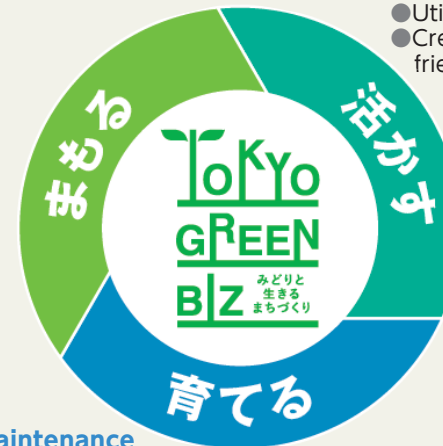
- Looking 100 years into the future, we will realize a sustainable city in harmony with nature by working with residents and businesses to “protect,” “nurture,” and “make the most of” Tokyo’s greenery

Halt the decline of Greenery

- Protect farmland
- Protect woodlands (house forests, etc.)
- Protect forests (water source forests, etc.)

Utilize the diverse functions and values of greenery

- Introduce Green Infrastructure
- Utilize Tama timber
- Create spaces that are friendly to the waterfront



Creation and appropriate maintenance of greenery

- Develop parks
- Enrich street trees (to ensure safety and comfort)
- Create greenery in the city in line with urban development



TOKYO GREEN BIZ

Policy Targets

- Expand designation and public ownership of conservation areas to approximately

1,000 ha (by 2050)

- Metropolitan parks

Cumulative total **2,180** ha

Marine parks

Cumulative total **990** ha



Green and Water Network

The importance of “greenery and water” in urban areas is becoming more and more important in order to combat climate change, ensure biodiversity, and improve wellbeing. By protecting existing greenery, halting the decline of greenery, improving both the quality and quantity of greenery, and enhancing the attractiveness of waterfront areas, we will realize an attractive Tokyo.





Three “Cities” that will shape Tokyo's future

Safe City

**Developing a safe and secure Tokyo
by building a resilient and sustainable city**

Our greatest mission is to protect the lives and livelihoods of the Tokyo residents from all kinds of crises.

With the spirit of “Always Be Prepared,” we will evolve Tokyo into a “resilient and sustainable city” that is able to withstand a wide range of risks, including natural disasters and climate change.

Achieve a decarbonized society and make a significant contribution to achieving net-zero emissions worldwide



The year 2035 will be like this!

Tokyo will
be better

Promote decarbonization and stable energy supply by implementing renewable energy and strengthening energy conservation

Accelerate social implementation of green hydrogen

Promote adaptation measures in all areas to minimize the impact of climate change

Policy Targets

- Reduce greenhouse gas emissions (compared to 2000) :

60% or more

- Establish a green hydrogen supply system
Expand supply from other prefectures in addition to manufacturing in Tokyo (2030)
Establish supply system including overseas (2035)



Policies to make it better

To achieve
our vision

Make renewable energy a key energy source

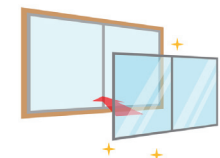
- Introduce a variety of renewable energy sources, including next-generation solar cells, floating offshore wind farms, geothermal, and others



Image of offshore wind power

Maximize energy efficiency

- Strengthen energy conservation and insulation of buildings, including existing homes and rental housing
- Promote energy-saving measures in data centers



Insulation by internal windows

Social Implementation of Hydrogen Energy

- Build domestic and international supply chains, and promote commercial use in mobility and industrial sectors
- Expand trial transactions of green hydrogen



Japan's first hydrogen station in a bus station (image)

Transition to a Circular Economy

- Resource recycling by material and product throughout the supply chain
- Promote collaboration among businesses by strengthening business matching and information dissemination

circular economy



In addition to conventional 3R initiatives, economic activities that generate added value through services, while reducing resource input and consumption and making effective use of stock

Become the world's most resilient city that protects residents from the threat of disasters



The year 2035 will be like this!

Reinforce measures against heavy rainfall and storm surge in light of increased rainfall and sea level rise due to climate change

Accelerate earthquake resistance, elimination of utility poles, fireproofing of densely wooded areas, and measures to prevent ash fall during volcanic eruptions, etc.

Enhance preparedness to protect Tokyo residents from emergencies associated with unstable geopolitical risks

Policy Targets

- Total storage volume of regulating reservoirs in operation throughout the metropolitan area :

approx. **3.65**million m³

- Elimination of utility poles

Area inside of Loop Road No.7 completed



Tokyo will
be better

Policies to make it better

Promote TOKYO Resilience Project

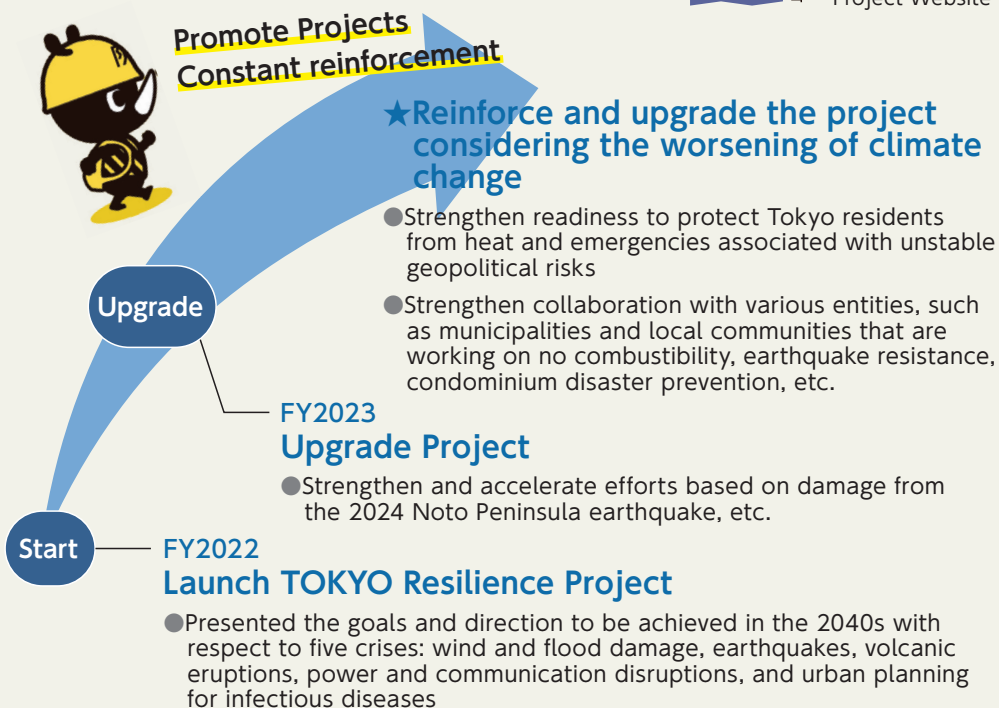
Aiming for "peace for the next 100 years," we are strongly promoting countermeasures against windstorms, floods, earthquakes, volcanic eruptions, and other crises that threaten Tokyo

「100年先も安心」を目指して

TOKYO 強靱化 PROJECT



TOKYO Resilience
Project Website



To achieve
our vision

Realize the safest, most secure and resilient city in the world

Protect the lives and livelihoods of Tokyo residents from the threat of disasters such as wind and flood damage which are becoming increasingly severe, earthquakes directly under the capital, and volcanic eruptions as well as from the heat that is becoming more severe due to climate change and maintain the functions of the capital

Wind and flood damage

- Promote efforts to develop an underground river connecting the Loop Road No.7 Underground Regulating Reservoir to Tokyo Bay
- High-standard levee construction to create an upland community
- Raise tide embankments in response to climate change
- Expand introduction of green infrastructure (to private facilities in addition to public facilities)
- Promote countermeasures against mudslides and other landslides

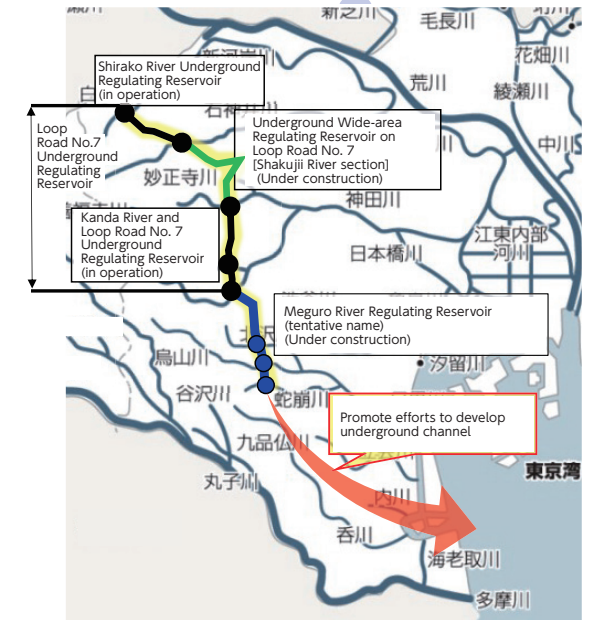
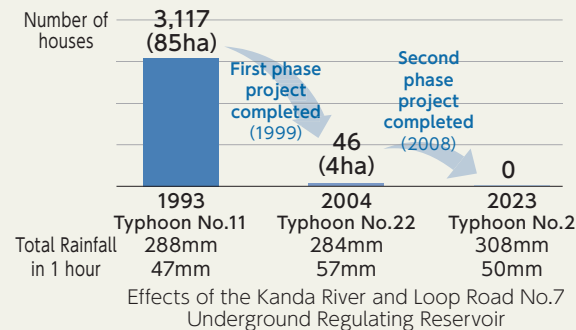


Image of underground channel plan

Earthquake

- Earthquake resistance of buildings and infrastructure (expansion of support for earthquake resistance, and earthquake resistance of metropolitan subways, water supply facilities, sewer pipes, etc.)
- Promote roads projects that provide access routes to wide-area disaster prevention centers (e.g., the Chuo Nanboku Line, extension of the Metropolitan Expressway Harumi Line, etc.)
- Promote liquefaction countermeasures in conjunction with urban development
- Further no combustibility in densely populated wooden housing areas based on the new "Disaster-Resistant City Development Promotion Plan"
- Promote the development of specific maintenance routes that can block the spread of fire in urban areas and serve as evacuation routes and emergency vehicle traffic routes

Volcanic eruption

- Reinforce the system to remove ash fall from roads
- Build a system to support damage mitigation measures for landslides caused by volcanic eruptions
- Facilitate evacuation for islands

Eliminating utility poles

- Speed up the process by strengthening DX and systems
- Actively encourage municipalities to remove utility poles
- Start integrated design of metropolitan and municipal roads in the islands
- Considerate effective promotion measures in residential land development

Countermeasures against heat

- Ensure green shade and promote urban greening
- Heat island countermeasures for roads, such as the planned installation of thermal barrier pavements and water-retaining pavements

Protect lives from disasters and live safely, securely + comfortably



The year 2035 will be like this!

Raise each resident's awareness of disaster prevention and create an environment for safe home evacuation

Reinforce disaster resilience of condominiums and other buildings and improvement of community disaster preparedness

Improve living conditions at evacuation centers and speeding up support for disaster victims by Disaster Prevention DX

Tokyo will
be better

Policies to make it better

To achieve
our vision

Protect your own life — Self-help —

“Know”
Disaster Prevention
Information

- “Disaster Preparedness Tokyo App” provides disaster prevention information, including useful content in times of disaster

“Prepare”
in advance

- “Tokyo Stockpile Navi” to learn about necessary stockpiling

“Protect”
yourself

- Install seismic breakers to prevent fires caused by electricity



東京 備蓄ナビ

Help each other in the community — Mutual Aid —

Reinforce condominium disaster resilience

- Cooperate with the surrounding community through support for “Tokyo Staying Condominiums,” which make it easier to continue living in Tokyo even in the event of a disaster
- Support measures to prevent elevator lock-ins and stockpile materials and equipment (disaster prevention cabinets) in case of lock-ins



Strengthen local disaster preparedness

- Create opportunities for town councils/residents' associations and condominium residents to connect through joint disaster drills
- Support for the purchase and repair of emergency storage warehouses for town councils and residents' associations

Policy Targets

- Percentage of respondents practicing disaster prevention behaviors to protect their own lives :

90 % or more

- Total number of participants in disaster drills, etc. :

14 million or more



■ Protect the lives of Tokyo residents — Public assistance —

Improve living conditions in shelters

■ Eliminate sleeping together, provide hot meals, ensure a bathing environment, etc.

- Support municipalities to improve the environment of evacuation centers, including cots, indoor partitions and tents, and hot showers
- Utilize hotels and inns as primary evacuation centers for people with special needs
- Utilize central kitchens, kitchen cars, and other private-sector resources to provide hot meals
- Support municipalities to establish rules for accepting pet evacuation and to provide equipment and materials for accepting pets at evacuation shelters



Maintain restrooms that can be used even in case of a disaster

- Promote comfortable and hygienic restrooms for diverse evacuees
- Support municipalities in developing various disaster toilets required according to local conditions
 - Portable Toilets
 - Manhole Toilets
 - Toilet car
 - Self-treating toilets etc.



Manhole Toilets

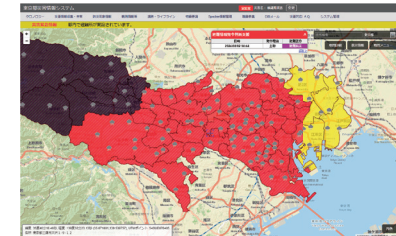
Utilize Disaster Prevention DX

■ Monitor the damage situation

- Rebuild the Disaster Information System (DIS) to visualize disaster information and speed up disaster countermeasure operations
- Collect damage information using satellite imagery

■ Support disaster victims

- Consider building a system for consistent information management from safety confirmation immediately after the disaster to recovery



Reinforce disaster preparedness

■ New Disaster Prevention Base in the Tama Region

- Develop a disaster prevention center that serves as an alternative to the Tokyo Metropolitan Disaster Prevention Center (Tokyo Metropolitan Government Office)



Tama Regional Disaster Prevention Warehouse

■ Measures for people who have difficulty returning home

- Real-time monitoring of post-disaster congestion and temporary accommodation facilities to enhance operations



Tachikawa Regional Disaster Prevention Center

Protect the lives and safety of Tokyo residents from crime, accidents, fire, etc.



The year 2035 will be like this!

Ensure public safety by responding appropriately to increasingly diverse and sophisticated crimes

Reduce the number of serious traffic accidents and accelerate efforts to create a safe and smooth traffic environment

Strengthen firefighting capabilities for fires and disasters

Tokyo will
be better

Policies to make it better

To achieve
our vision

Protect Tokyo residents from anonymous and fluid criminal groups

Housing Security

- Emergency support for the purchase of security equipment such as security cameras and intercoms with cameras

Community watchdog

- Strengthen the watchdog activities of crime prevention volunteers (Support for purchase of patrol vehicles)

Crime prevention

- Introduce AI-based monitoring tools to extract, classify, and sequentially warn of postings by illegal part-time workers



Mascot character to promote safe and secure community development
"Mimamori inu"

Traffic safety measures

- Predict and detect traffic congestion using AI and automatically control traffic signals to ensure smooth traffic flow
- Equip parking and ticketing facilities with the ability to transmit information on the availability of parking spaces

Strengthen disaster response capabilities

- Research and develop drones for firefighting using water and fire-extinguishing chemicals
- Introduce large chemical vehicles equipped with perforating nozzles to fight aircraft fires
- Introduce the first firefighting robot in Japan that detects and searches for delayed escape



Policy Targets

- Number of registered volunteer crime prevention groups :

1,450 Groups

- Fill Rate of Fire Brigades in the Special Wards Area :

90 % or more



Everyone can receive necessary medical care in a familiar community with peace of mind



The year 2035 will be like this!

Tokyo will be better

Enhance the quality of medical services by improving the medical system and promoting DX

Protect as many lives as possible by responding quickly from 119 call to treatment

Further improve preparedness for unknown infectious diseases and large-scale disasters

Policies to make it better

To achieve our vision

Enhance medical services

- Provide seamless medical services, from prevention to home care, in cooperation with medical institutions to enhance local medical care and promote medical DX
- Support private hospitals to receive patients from the elderly, children, obstetrics, and emergency medicine to ensure local medical services

Establish a system for in-home medical care

- Support to establish a 24-hour medical treatment system to ensure that patients can live in their familiar neighborhoods

Digitize medical institutions

- Expand support for introduction of electronic medical records
- Support DX human resource development and set up a consultation service

Promote cancer control

- Establish proton therapy facilities
- Improve the clinical test rate by raising public awareness

Improve obstetric and perinatal care

- Consulting and support for NICU hospitalized children and their families
- Support the institutions using and registering donor milk

Strengthen emergency infrastructure

- Systematically increase the number of emergency medical teams
- Assign nursing assistants to the emergency department to strengthen the system for receiving elderly patients

Build a system that remains robust even in times of emergency

- Establish a system for the temporary operation of medical facilities in the event of an infectious disease emergency
- Deploy mobile pharmacy and satellite communication facilities in preparation for disasters



Policy Targets

- Introduce Electronic Medical Records

All medical institutions

- Emergency team arrival time at scene

Less than 8.5 minutes



Tama and Tokyo islands, where you can live a comfortable and fulfilling life with all the attractions of a region you want to visit and live in



The year 2035 will be like this!

Tokyo will be better

Make “Tama” and “Islands” a “brand” by leveraging regional attractions

Realize smart and comfortable living by integrating the functions necessary for daily life

Provide a safe and secure living environment surrounded by beautiful water and greenery

Utilize regional characteristics and potential to become the home of new industries

Policy Targets

- Intention to settle in the region in the Tama/Island

85%

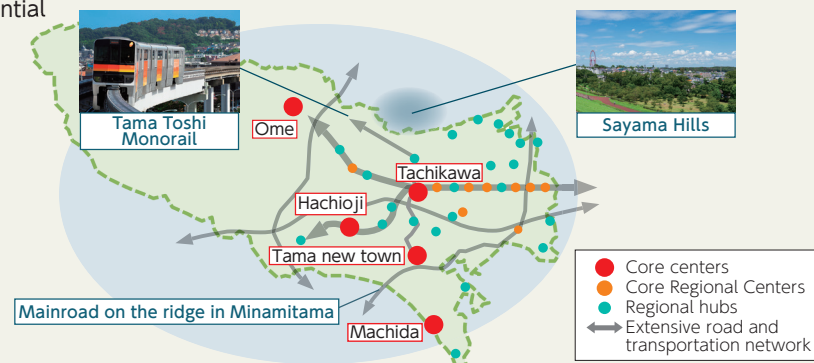


Policies to make it better

To achieve our vision

City planning that makes the most of Tama's nature and regional characteristics

Promote urban development along the extended Tama Toshi Monorail and other areas in cooperation with local governments, based on the region's diverse attractions and potential



Strengthen the disaster preparedness of the Tama area

- Strengthen the functions of disaster prevention bases such as the Tachikawa Regional Disaster Prevention Center and the Tama Regional Disaster Prevention Warehouse
- Promote projects such as roads that provide access routes to wide-area disaster prevention centers
- Flood countermeasures through the construction of regulating reservoirs along the Shakujii River, Yanase River, etc.

Promote immigration and settlement

- Conduct tours to experience daily life and vacant houses and to exchange workouts
- Develop a “Tokyo Vacant House Map” to promote the vacant houses
- Promote the use of vacant houses and provide more support for the renovation of vacant houses

Make Tama more attractive ~Tama, full of greenery~

High quality nature full of greenery

- Approximately 70% of Tokyo's forests are in the Tama area
- Takao, the world's most-visited mountain (approximately 3 million climbers per year), and other abundant nature and parks are close at hand
- Expansion of farmland, including citizen farms and farms where people can experience agriculture



Concentration of companies, research institutes and universities

- Well-balanced location between business towns and industrial parks. 60% of Tokyo's manufactured goods shipments are from the Tama area
- Over 200 universities and research institutes are concentrated in the Tama area, and innovation is expected to be created



Attractiveness of Tama

A history continuing from Edo, new sanctuary

- Many historical and cultural tourist resources and tourist attractions in harmony with the cityscape
- Many anime and other works pilgrimages



Livability

- Comfortable living with a large living area
- Natural environment suitable for raising children
- Increasing number of municipalities that are making efforts to support migration



Convenience underpinning attractiveness

- Easy access from central Tokyo (approx. 30 min. between Tachikawa and Shinjuku)
- Good transportation system supporting the region (expected to be further improved with the extension of the Tama Toshi Monorail)
- Improved road network (steady improvement of expressway network and urban planning roads)



Tama's Development Strategy

The Tokyo Metropolitan Government's wide-area urban development initiatives aimed at realizing a Tama that is both growing and matured



*In Japanese

Tama Promotion Action Plan

The TMG projects to be implemented over a period of approximately three years, measures to support the proactive efforts of municipalities and other measures to promote the Tama area



*In Japanese

To be an area where people want to live, work, visit, play, stay, and enjoy meals by refining its rich characteristics and charms and attracting people to the area

Enhance the charm of the islands ~Tokyo Treasure Island SHINKA Project~

Maximize the rare value and potential of the islands and evolve it into a world-class brand that attracts both residents and visitors



Policies to make it better

To achieve our vision

Realize the sustainable islands

- Support for ambitious initiatives by municipalities that will lead to the sustainable development of the islands and the creation of attractiveness
- Improve the living environment, including the use of vacant houses
- Support for the efforts of municipalities to promote migration and settlement in accordance with their local circumstances

Provide high quality services

- Support the efforts by municipalities to attract and develop high-quality lodging facilities
- Support the creation of a system to build a brand and support for ambitious businesses
- Seize opportunities for dignitaries from various countries to gather and promote the attractiveness of the region at international conferences, etc.

Improve transportation network

- Conduct familiarization trips and overseas PR at trade fairs to increase the number of business jets
- Invite cruise ships and realize superyacht port calls

Advanced initiatives

- Promote community-based problem-solving using digital technology
- Promote PR through websites, social media, and other media channels



The transformation that ushers in a new era is improving the quality of life of Tokyo residents



The year 2035 will be like this!

Evolve the structural reform of the Tokyo Metropolitan Government to the next stage

Fundamental reform of social structure in response to changing needs of the times

Firmly maintain a strong and sustainable financial base

Tokyo will be better

Policies to make it better

To achieve our vision

Structural Reform of the TMG From "SHIN-TOSEI" to "SHIN-TOSEI X"

Evolve into "SHIN-TOSEI X" with "Policy DX" as a pillar to make a further leap forward to improve the quality of services that can be truly "felt" by Tokyo residents



*In Japanese

August 2020 Kickoff

phase1.0

Break away from analog environment
(Paperless, faxless, etc.)

phase2.0

Provide high quality services
(Digitization of administrative procedures, improvement of counter services, etc.)

phase3.0

"Policy DX" across organizations and disciplines
(Collaboration with the national government, municipalities, inter-bureaus within the TMG, policy collaboration organizations, etc.)

Structural Reform of Society for Sustainable Growth

Take on the challenge of reforming structural issues that are barriers to growth from a national perspective, make requests to the national government, and proactively working to resolve these challenges ourselves

Empower "you time" by promoting DX (digital transformation)

You time : Free time that can be used to enhance one's life

■ If you telework one day a week, you get the equivalent of **10 working days** per year in "you time" *

▶ **Make the most of your saved commuting time to enrich your life!**

* 50 times per year × 1 hour 35 minutes (daily commuting time)
= 79 hours ÷ 10 working days

Realize “co-existence and co-prosperity” to support and develop together with all regions of Japan



The year 2035 will be like this!

Achieve Japan’s overall development through “true regional development” based on coexistence and co-prosperity between Tokyo and the other regions

東京と全国各地との
共存共栄



*In Japanese

Tokyo will
be better

Promote growth throughout Japan

Create innovation

- Connect startups and supporters nationwide through the Tokyo Innovation Base (TIB) and SusHi Tech Tokyo, and share the achievements with the world

Feature attractions from all over Japan

- Tie-ups with local governments across Japan to showcase each region’s attractions and promote inbound tourism, as well as encourage visitors to explore other regions

Promote industry through nationwide cooperation

- Promote industrial revitalization by expanding sales channels for small and medium-sized enterprises (SMEs) by holding exhibitions and business meetings inviting exhibitors from nationwide

Promote nationwide products

- Promote the appeal of products from all over Japan by holding PR events for agricultural, forestry, and fishery products and the “WOOD,” an exhibition and business meeting for wood products



Coexistence and co-prosperity
between Tokyo and
other regions

Solve common issues across Japan

Share technology and Know-how including DX

- Share pioneering initiatives such as digital public assets created through GovTech Tokyo and digitalized policies

Promote measures through local government collaboration

- Expand the use of domestically produced green hydrogen in Tokyo
- Research schemes that benefit other regions and facilitate renewable energy procurement for businesses in Tokyo
- Strengthen collaboration with each prefecture through agreements on measures

Support restoration of disaster-affected areas

- Aid recovery and restoration efforts, strengthen cooperation among local governments
- Hold product exhibitions in Tokyo to sell local products and traditional crafts from disaster-affected areas, provide ongoing support

Deepen collaboration with diverse actors creates a brighter future



The year 2035 will be like this!

Strengthen partnerships with diverse actors to address challenges

Collaborate with cities around the world to solve common urban issues

Mobilize policies to establish a trajectory toward a sustainable future

Tokyo will
be better

Cooperate with universities

Integrate university knowledge and innovative ideas into Tokyo's policies

- Establish "Regular Roundtable Meetings with Universities" to exchange opinions on solutions to Tokyo's challenges
- Utilize knowledge and ideas in TMG's governance through systems such as the "Project Proposal System by University Researchers" and "Joint Projects between the TMG and Universities"



Development of an Oral Health and Nutrition Education Program for Children (Institute of Science Tokyo and The University of Tokyo)

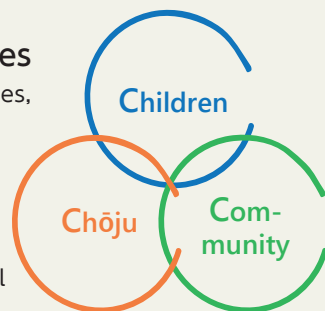
Cooperate with municipalities

Promote the "3 Cs" in collaboration with municipalities

Under close cooperation with municipalities, develop pioneering and cross-disciplinary initiatives related to

Children
Chōju (Longevity)
Community

in collaboration with universities and local organizations



Realize a sustainable society

Develop policies by uniting domestic and international efforts

- Citizens, municipalities, companies, and universities etc. unite to promote initiatives for the brighter future
- Participate in discussions on creating goals 'beyond the SDGs,' and commit to global development and the achievement of international objectives




Speech at the World Urban Forum

PREDICTIONS FOR THE 22nd CENTURY

Foreseeing Tokyo 100 Years from Now

As an out-of-the-box attempt to look into the future, we used generative AI to predict how life would be in 100 years' time



TOKYO METROPOLITAN GOVERNMENT

Tokyo 2050 Strategy

TOKYO
2050
Strategy

No. 2050

TOKYO, JAPAN

Future

PREDICTIONS FOR THE 22nd CENTURY

Foreseeing Tokyo 100 Years from Now

As an out-of-the-box attempt to look into the future, we used generative AI to predict how life would be in 100 years' time

sources enable safe use of clean and inexhaustible energy.

·**Superhuman Sports Events**
New-age sports will be performed in virtual spaces and zero-gravity arenas.

·**Instant Skill Acquisition**
You can acquire skills and gather information in a flash by directly installing knowledge into your brain. Anyone can master the operation of complex devices in an instant or easily cook a dish according to the recipe.

·**Live Healthy up to 120**
With gene therapy and regeneration technology, you can repair lost bodily functions and organs at the cellular level. The healthy life expectancy is now 120.

·**Control the Weather**
We can bring rain to drought-stricken areas, and giant wind power generators can absorb typhoon energy to protect people from violent weather.

·**Dream Theater**
People can record and play dreams while they sleep, to look back and share with others.

·**Automatic Treatment with Nanorobots**
Nanorobots enable minimally invasive treatments for patients by

precise delivery of drugs.

·**Auto-Adapting Buildings**
Buildings change according to their surroundings like a living thing. As if breathing, they purify the air, adjust room temperature, and generate energy through photosynthesis.

·**Living in Undersea Palace**
You can enjoy a comfortable life in a self-sufficient underwater city utilizing rare seafood, deep-sea resources, and marine energy.

·**Befriend an Alien**
By catching signals from distant stars, we can encounter extraterrestrial life and civilizations, share technologies, and enjoy cultural exchange.

·**Comfortable All-Weather Suits**
The new suit lets you engage in various activities in an adequate body temperature. It ensures comfort regardless of the external environment, whether you are in the tropics, the poles, heavy rain, or strong winds.

·**Mobility with 100% Synchronization**
Personal mobility devices that automatically adjust to the user's physical condition and purpose are now widespread, letting people travel on the ground or in the air.

·**Telepathic Communication**
Brainwave-based communication enables free and rich interaction across language and species barriers, with speakers of other languages, as well as with other animals and plants like pets, insects, and flowers.

·**The Age of Total Robot Labor**
Robots provide support in all aspects of work. Humans have more time to engage in creative work and generate new ideas.

·**Re-Experiencing History**
Using holograms, you can witness historical moments, talk to historical figures, and observe the movements and cries of giant dinosaurs and extinct animals.

·**Complete Prediction of Earthquakes**
Deep underground high-precision sensors provide real-time analysis of crustal movements and minute temperature shifts, enabling earthquake prediction to protect the people.

·**Teleportation**
With the development of technology to instantly transport objects, you can have delicious food from around the world appear with a snap of the finger or enjoy traveling abroad as if shopping in your neighborhood.

·Relocating Outside of Earth

The universe is now the sphere of human life, and people can comfortably live on the moon, Mars, or space stations.

·Delivering the Human Five Senses

Share the same experience with people miles away, through data of the five senses.

·Trash-less Trash Cans

All household waste is automatically sorted and recycled into new products, eliminating waste.

·A Full-Stomach Society

Many factories producing artificial meat and vegetables solve the world's food and famine issues.

·A Tailor-Made Story

Offering the ultimate immersive experience by making real-time changes to a storyline based on the user's emotion and reaction.

·Unlimited Energy

The dramatic advances in solar energy and other sources enable safe use of clean and inexhaustible energy.

·Superhuman Sports Events

New-age sports will be performed in virtual spaces and zero-gravity arenas.

·Instant Skill Acquisition

You can acquire skills and gather information in a flash by directly installing knowledge into your brain. Anyone can master the operation of complex devices in an instant or easily cook a dish according to the recipe.

·Live Healthy up to 120

With gene therapy and regeneration technology, you can repair lost bodily functions and organs at the cellular level. The healthy life expectancy is now 120.

·Control the Weather

We can bring rain to drought-stricken areas, and giant wind power generators can absorb typhoon energy to protect people from violent weather.

·Dream Theater

People can record and play dreams while they sleep, to look back and share with others.

·Automatic Treatment with Nanorobots

Nanorobots enable minimally invasive treatments for patients by precise delivery of drugs.

·Auto-Adapting Buildings

Buildings change according to their surroundings like a living thing. As if breathing, they purify the air, adjust room temperature, and generate energy through photosynthesis.

·Living in Undersea Palace

You can enjoy a comfortable life in a self-sufficient underwater city utilizing rare seafood, deep-sea resources, and marine energy.

·Befriend an Alien

By catching signals from distant stars, we can encounter extraterrestrial life and civilizations, share technologies, and enjoy cultural exchange.

·Comfortable All-Weather Suits

The new suit lets you engage in various activities in an adequate body temperature. It ensures comfort regardless of the external environment, whether you are in the tropics, the poles, heavy rain, or strong winds.

·Mobility with 100% Synchronization

Personal mobility devices that automatically adjust to the user's physical condition and purpose are now widespread, letting people travel on the ground or in the air.

·Telepathic Communication

Brainwave-based communication enables free and rich interaction across language and species barriers, with speakers of other languages, as well as with other animals and plants like pets, insects, and flowers.

·The Age of Total Robot Labor

Robots provide support in all aspects of work. Humans have more time to engage in creative work and generate new ideas.

·Re-Experiencing History

Using holograms, you can witness historical moments, talk to historical figures, and observe the movements and cries of giant dinosaurs and extinct animals.

·Complete Prediction of Earthquakes

Deep underground high-precision sensors provide real-time analysis of crustal movements and minute temperature shifts, enabling earthquake prediction to protect the people.

·Teleportation

With the development of technology to instantly transport objects, you can have delicious food from around the world appear with a snap of the finger or enjoy traveling abroad as if shopping in your neighborhood.



TOKYO
METROPOLITAN
GOVERNMENT

Tokyo 2050 Strategy - Unlocking a Better Future -

Registration No.(1)
Published April 2025



Edited by: Planning and Coordination Section, Planning and Coordination Division
Office of the Governor for Policy Planning Tokyo Metropolitan Government
2-8-1 Nishi-shinjuku, Shinjuku-ku, Tokyo 163-8001 Japan

Printed by: Kitajima Co., Ltd.
2-11-7 Tatekawa, Sumida-ku, Tokyo 130-0023 Japan

