



Shaping our Tomorrow

In an age of uncertainty,
Tokyo is working toward a sustainable future.

Introducing “SusHi Tech Tokyo,”
our concept for overcoming global urban challenges
using cutting-edge technology, diverse ideas,
and digital know-how.

Shaping our Tomorrow. SusHi Tech Tokyo.



TiB Tokyo Innovation Base

Becoming a “NODE”
for innovation around the world.

Tokyo Innovation Base aims to be a global node of innovation. It is a place where diverse individuals connect and support innovators who will advance society with their groundbreaking ideas and technologies. Tokyo Innovation Base aspires to be the world's most startup-friendly location, initiating a new wave of innovation.



- Bringing together SU, VC, AC, Corp., Gov. and Univ.
- Hosting regular events in various fields
- Offering acceleration programs
- Youth outreach (Children and Univ. students)



Tokyo Metropolitan Government

Policy Division, Office of the Governor for Policy Planning

+81-3-5388-2181
S0014801@section.metro.tokyo.jp
<https://www.seisakukikaku.metro.tokyo.lg.jp>

Office for Startup and Global Financial City Strategy

+81-3-5388-2144
S1130201@section.metro.tokyo.jp
www.startupandglobalfinancialcity.metro.tokyo.lg.jp



TOKYO

Your Business Partner of Choice

Team Tokyo Innovation
for All the STARTUPS



1 A Major Economic Player

Tokyo attracts top-class management personnel from all over Japan and the world. From financial to human resources, we have all you need to make your business a success.

City GDP

FY 2020

Did you know that Tokyo is the largest city in the world by GDP? It is equivalent to a major OECD country.

\$1.335

trillion



Total Market Cap

on the Tokyo Stock Exchange
as of Jan 2024

\$6.6

trillion



Personal Financial Assets

in Japan as of Sep 2023

\$14.8

trillion



Innovation Cities™ Index

by 2ThinkNow (2022-2023)

World No.1

Savills Resilient Cities Index

by Savills (2024)

World No.2

Global Power City Index

by Mori Memorial Foundation (2023)

World No.3

Highly rated in terms of livability and R&D.



Number of HQ

of Fortune Global 500 (2021)

World No.3



Number of Academic Institutions

Universities Research Institutions
FY 2023 FY 2014

144 1139



Population

as of Jan 2022

With the largest city population in the world and an advanced educational system, Tokyo is a treasure trove of highly skilled human resources.

35

million



National Strategic Special Zone

Boost Your Business

The National Strategic Special Zones are designated by the national government from the perspective of building "the most business-friendly city" in the world.

In the special zone, bold regulatory reforms and other measures, such as tax incentives, are being proactively promoted.

Some examples of special measures:

- Urban Revitalization: Special provisions to the City Planning Act, etc.
- Entrepreneurship: Tokyo One-Stop Business Establishment Center
- Foreign Human Resources: Relaxation of standards for residence status

Tokyo area special zone

Tokyo Metropolis
Kanagawa Prefecture
Chiba City (Chiba Prefecture)
Narita City (Chiba Prefecture)



The Ideal Place for International Events

A Gathering of Minds

Tokyo is a city of innovation, hosting over 500 international conferences each year as the city of choice for industry and academia.

Tokyo Convention & Visitors Bureau will support you in every way possible to secure safety and lead your event to great success.

- Proven track record as an Asia Pacific academic hub.
- The sixth most popular city in the world for association meetings.
- Financial and in-kind support for eligible meetings.

TOKYO UNIQUE VENUES

Need a special place to host your special event?

"TOKYO UNIQUE VENUES" features a variety of distinct venues, ranging from historical buildings to modern design facilities to meet the needs of organizers.



Hama-rikyu Gardens



Museum of Contemporary Art Tokyo



Aiming for "Safety for the Next 100 Years"
TOKYO RESILIENCE PROJECT

TOKYO

強靱化

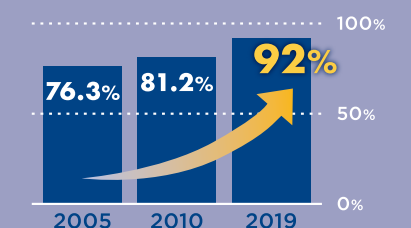
PROJECT

TOKYO Resilience Project

Nothing is more important than your safety. Tokyo offers a safe and secure environment so you can grow your business with a sense of ease.

In addition to support for seismic retrofitting of detached houses and condominiums, the TMG has been working to improve the earthquake resistance of bridges, water supply and sewerage systems, and other urban infrastructure.

The earthquake resilience of Tokyo's residences



2 Easy Living

Tokyo has all the necessary infrastructure and services for day-to-day living for you, and your family; so you can set up your life without worry and focus on making your business a success.

Best Cities to Live in

by Global Finance (2022)

This is based on eight metrics, including cost of living, quality of life, and pandemic response. Tokyo scored very high on combatting Covid-19.

World No.2



Number of Hospital Beds

per 1000 people in Japan
by OECD Statistics (2019)

World No.1

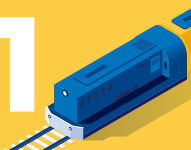
English-speaking Medical Institutions **More than 5,700**



Efficiency of Public Transport Services

by World Economic Forum (2022)

World No.1



Airport On-Time Performance

by Cirium (2023)

World No.1



Number of International Schools

FY 2021

43



Consultation services

If you have any problems in your daily life, please contact us for telephone consultation services in English, Chinese, Korean, and many more.

Medical Information Services

We provide information about medical institutions for foreign residents.

- Multilingual hospital guide
- Information about the Japanese medical system



Education Consultation Center

We provide consultation services for the education of children and students.

- School life
- Career paths
- Bullying problems



In Case of Emergency

Emergency call service with interpreters are available 24 hours a day. You can speak in your native language.

119

Ambulance / fire

110

Police



TIPS for Tokyo Life

Tokyo Intercultural Portal Site
東京都多文化共生ポータルサイト

This website delivers a variety of information with the hope that foreign residents of Tokyo can live healthily and peacefully.



3 A Global Culture Capital

Tokyo is a cultural cornucopia, rich in diversity and uniqueness. Art, food, architecture, fashion, and even the natural environment; there is plenty of stimulation to boost and refine your creativity.

Nature

More than just a metropolis, Tokyo's urban landscapes coexist with lush greenery for all your nature needs.

40% forest; mountains more than 2000m high; and a coast with access to lots of islands. Such a variety of nature into your daily life, whether you're working, learning or relaxing, makes for a more varied and enriching time in Tokyo.

Discover a previously unknown side of Tokyo.



Ome



Shikinejima

Art

From the traditional to the contemporary, Tokyo has a flourishing art scene.

"TOKYO TO GO" is a guide introducing various museums, art galleries, theaters, and other cultural institutions so that visitors to the city can fully experience Tokyo's diverse culture.

Please download the guide in your language from the web site →



Number of Cultural Institutions

FY 2022

Museum, Galleries

312

Theater, Hall

119

Number of Michelin Star Restaurants

by The MICHELIN Guide Tokyo 2024

World No.1



Multilingualization of station signage

FY 2019

100%

The Best Big Cities in the World

by Condé Nast Traveler Readers' Choice Awards (2023)

World No.2



Travel & Tourism Development Index 2021

by World Economic Forum (2022)

After the pandemic, Japan took the top spot in the 2021 Index, which focuses on "sustainability" and "resilience".

World No.1

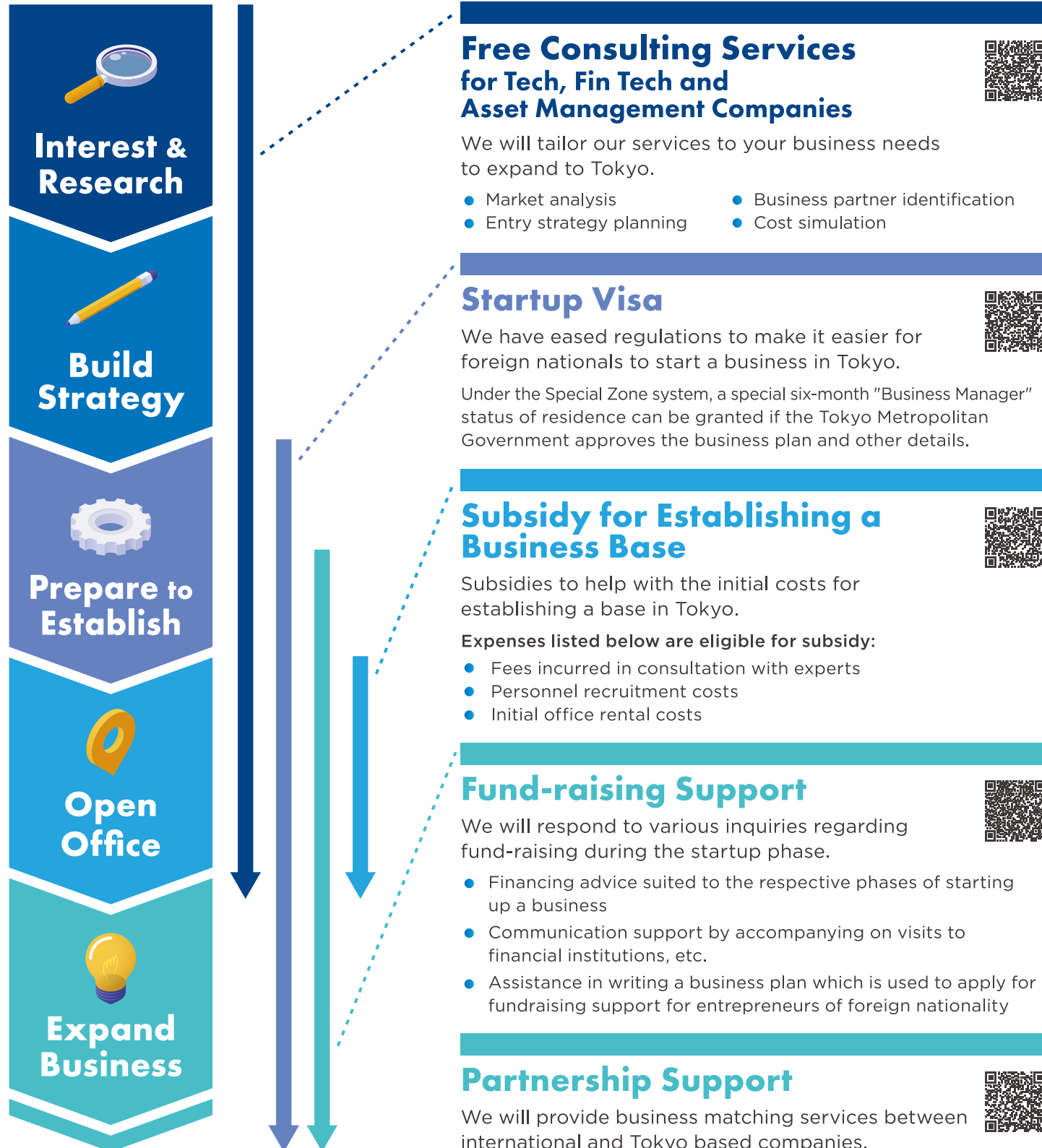


4

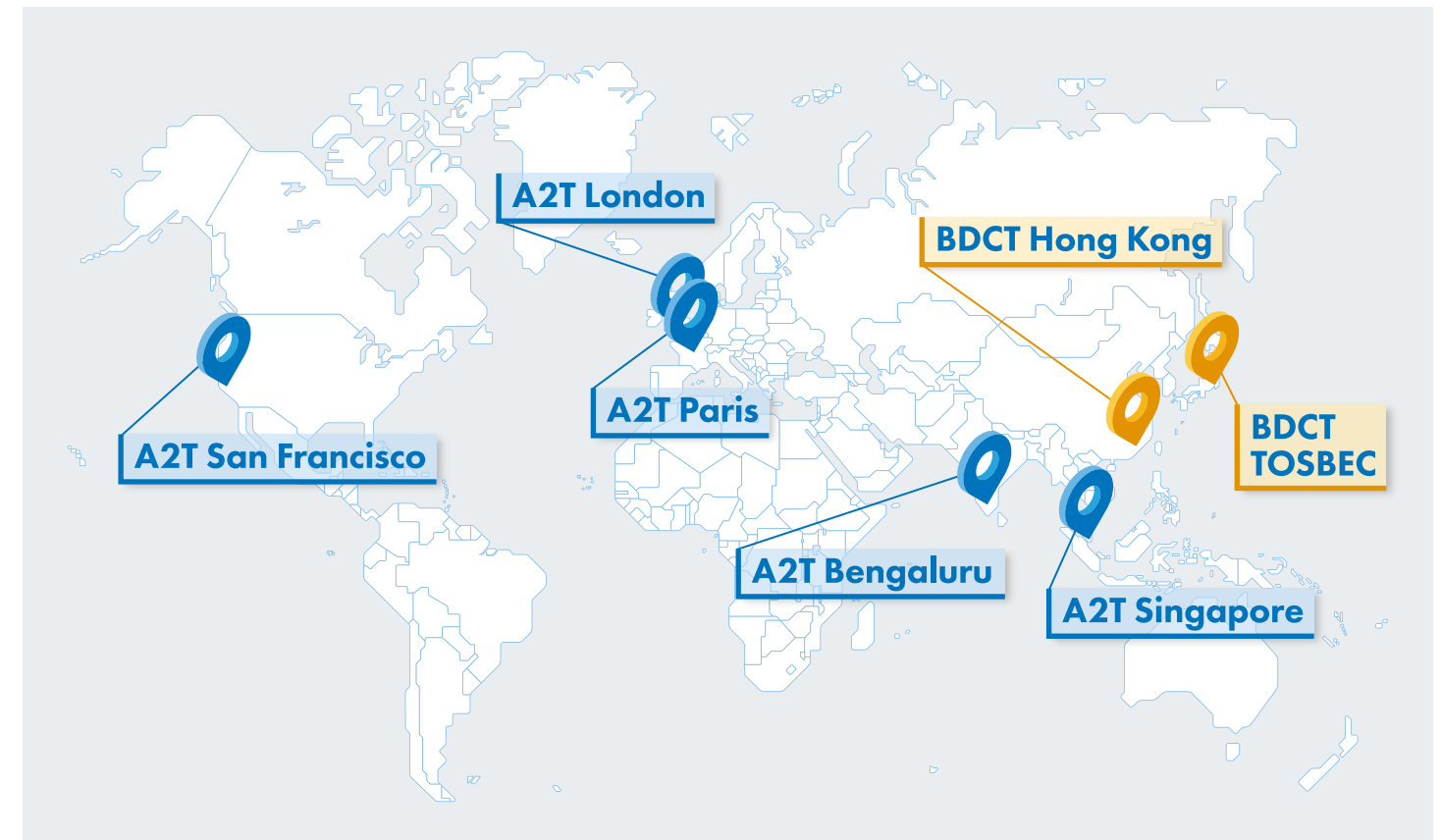
Seamless Support

The Tokyo Metropolitan Government is constantly enhancing our support services. Make us your business partner of choice, and together we can build a bright future.

Support Projects



Support Desks



A2T Access to Tokyo

Immediate, multilingual responses to inquiries on Japanese market entry and market information.

A2T San Francisco

555 Mission St #1400, San Francisco, CA 94105 USA
a2t-sanfrancisco@deloitte.com

A2T London

1 New Street Square, London EC4A 3HQ United Kingdom
a2t-london@deloitte.com

A2T Paris

Tour Majunga 6 Place de la Pyramide 92908 Paris-la-Défense Cedex
a2t-paris@deloitte.com

A2T Singapore

6 Shenton Way, OUE Downtown2 #33-00, Singapore 068809
a2t-singapore@deloitte.com

A2T Bengaluru

Prestige Trade Tower, Level 19, 46, Palace Road, High Grounds, Bengaluru Karnataka 560001 India
a2t-bengaluru@deloitte.com



BDCT Business Development Center TOKYO

Akasaka / Marunouchi / Yurakucho (TiB) / Hong Kong

Provides comprehensive services for foreign companies that are considering establishing in or expanding to Tokyo.



TOSBEC Tokyo One-Stop Business Establishment Center

Akasaka / Yurakucho (TiB) / Shibuya

Provides unified procedures that foreign companies and startups need to complete to establish a business.

